

For Research Use Only

Properdin/PFC Polyclonal antibody, PBS Only

Catalog Number: 17192-1-PBS



Basic Information

Catalog Number: 17192-1-PBS	GenBank Accession Number: BC015756	Purification Method: Antigen affinity purification
Size: 100ug , Concentration: 1 mg/ml by Nanodrop;	GeneID (NCBI): 5199	
Source: Rabbit	UNIPROT ID: P27918	
Isotype: IgG	Full Name: complement factor properdin	
Immunogen Catalog Number: AG9798	Calculated MW: 469 aa, 51 kDa	
	Observed MW: 50 kDa	

Applications

Tested Applications:
WB, IHC, Indirect ELISA

Species Specificity:
human

Background Information

CFP, also named as Properdin or CFP, is a 469 amino acid protein, which contains 7 TSP type-1 domains. CFP as secreted protein is a positive regulator of the alternate pathway of complement. It binds to and stabilizes the C3- and C5-convertase enzyme complexes. Properdin deficiency poses a significant risk for severe meningococcal infections (PMID: 22229731). Properdin may be novel biomarker for future risk of type 2 diabetes (PMID: 22338105).

Storage

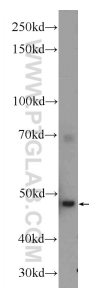
Storage:
Store at -80°C.

Storage Buffer:
PBS Only

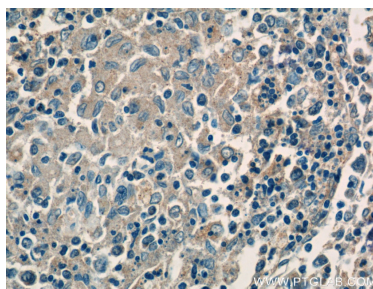
For technical support and original validation data for this product please contact:
T: 1 (888) 4PTGLAB (1-888-478-4522) (toll free in USA), or 1(312) 455-8498 (outside USA)
E: proteintech@ptglab.com
W: ptglab.com

This product is exclusively available under Proteintech Group brand and is not available to purchase from any other manufacturer.

Selected Validation Data



Jurkat cells were subjected to SDS PAGE followed by western blot with 17192-1-AP (CFP Antibody) at dilution of 1:300 incubated at 4 degree celsius over night. This data was developed using the same antibody clone with 17192-1-PBS in a different storage buffer formulation.



Immunohistochemical analysis of paraffin-embedded human spleen tissue slide using 17192-1-AP (CFP Antibody) at dilution of 1:50 (under 40x lens). This data was developed using the same antibody clone with 17192-1-PBS in a different storage buffer formulation.