

For Research Use Only

WDFY2 Polyclonal antibody

Catalog Number: 17197-1-AP



Basic Information

Catalog Number:

17197-1-AP

Size:

150ul , Concentration: 280 ug/ml by Nanodrop;

Source:

Rabbit

Isotype:

IgG

Immunogen Catalog Number:

AG10415

GenBank Accession Number:

BC014004

GeneID (NCBI):

115825

UNIPROT ID:

Q96P53

Full Name:

WD repeat and FYVE domain containing 2

Calculated MW:

400 aa, 45 kDa

Observed MW:

45 kDa

Purification Method:

Antigen affinity purification

Recommended Dilutions:

WB 1:500-1:2000

Applications

Tested Applications:

WB, ELISA

Species Specificity:

human, mouse

Positive Controls:

WB : L-929 cells, 3T3-L1 cells

Background Information

WDFY2, also named Prof, is a protein that contains WD repeats and an FYVE domain. WDFY2 regulates the membrane-bound matrix metalloproteinase MT1-MMP (MMP14) efflux by controlling endosome sorting. WDFY2 may act as a tumor suppressor by limiting VAMP3-dependent recycling to inhibit matrix metalloproteinase secretion and cell invasion. (PMID: 31253801)

Storage

Storage:

Store at -20°C. Stable for one year after shipment.

Storage Buffer:

PBS with 0.02% sodium azide and 50% glycerol pH 7.3.

Aliquoting is unnecessary for -20°C storage

*** 20ul sizes contain 0.1% BSA

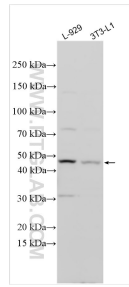
For technical support and original validation data for this product please contact:

T: 1 (888) 4PTGLAB (1-888-478-4522) (toll free in USA), or 1(312) 455-8498 (outside USA)

E: proteintech@ptglab.com
W: ptglab.com

This product is exclusively available under Proteintech Group brand and is not available to purchase from any other manufacturer.

Selected Validation Data



Various lysates were subjected to SDS PAGE followed by western blot with 17197-1-AP (WDFY2 antibody) at dilution of 1:1000 incubated at room temperature for 1.5 hours.