

For Research Use Only

HMGCLL1 Polyclonal antibody

Catalog Number: 17206-1-AP



Basic Information

Catalog Number: 17206-1-AP	GenBank Accession Number: BC024194	Purification Method: Antigen affinity purification
Size: 150ul , Concentration: 500 µg/ml by Nanodrop and 233 µg/ml by Bradford method using BSA as the standard;	GeneID (NCBI): 54511	Recommended Dilutions: WB 1:200-1:1000 IHC 1:50-1:500
Source: Rabbit	Full Name: 3-hydroxymethyl-3-methylglutaryl-Coenzyme A lyase-like 1	
Isotype: IgG	Calculated MW: 340 aa, 36 kDa	
Immunogen Catalog Number: AG10985	Observed MW: 32 kDa	

Applications

Tested Applications:

IHC, WB, ELISA

Species Specificity:

human

Note-IHC: suggested antigen retrieval with TE buffer pH 9.0; (*) Alternatively, antigen retrieval may be performed with citrate buffer pH 6.0

Positive Controls:

WB : SKOV-3 cells,

IHC : human liver cancer tissue,

Background Information

HMGCLL1 (3-hydroxymethyl-3-methylglutaryl-CoA lyase-like protein 1), also named as er-chL, is a close homolog of mitochondrial HMG-CoA lyase (mHL). HMGCLL1 catalyzes a cation-dependent cleavage of (S)-3-hydroxy-3-methylglutaryl-CoA into acetyl-CoA and acetoacetate, which is a key step in ketogenesis (PMID: 22847177, 22865860). HMGCLL1 has some isoforms with the molecular mass of 32-39 kDa and 6 kDa.

Storage

Storage:

Store at -20°C. Stable for one year after shipment.

Storage Buffer:

PBS with 0.02% sodium azide and 50% glycerol pH 7.3.

Aliquoting is unnecessary for -20°C storage

*** 20ul sizes contain 0.1% BSA

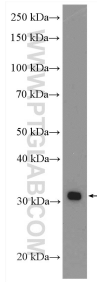
For technical support and original validation data for this product please contact:

T: 1 (888) 4PTGLAB (1-888-478-4522) (toll free in USA), or 1(312) 455-8498 (outside USA)

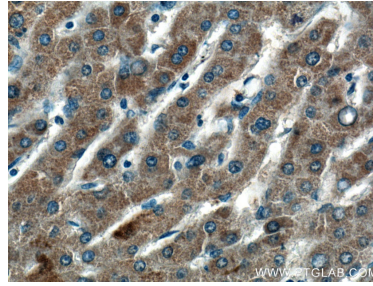
E: proteintech@ptglab.com
W: ptglab.com

This product is exclusively available under Proteintech Group brand and is not available to purchase from any other manufacturer.

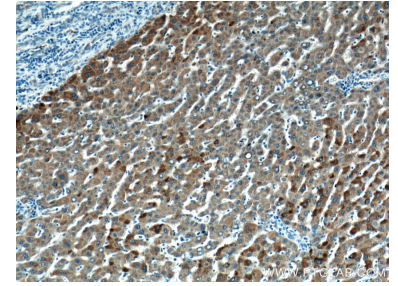
Selected Validation Data



SKOV-3 cells were subjected to SDS PAGE followed by western blot with 17206-1-AP (HMGCLL1 antibody) at dilution of 1:300 incubated at room temperature for 1.5 hours.



Immunohistochemical analysis of paraffin-embedded human liver cancer tissue slide using 17206-1-AP (HMGCLL1 antibody) at dilution of 1:200 (under 40x lens).



Immunohistochemical analysis of paraffin-embedded human liver cancer tissue slide using 17206-1-AP (HMGCLL1 antibody) at dilution of 1:200 (under 10x lens).