

For Research Use Only

LYZL1 Polyclonal antibody

Catalog Number: 17207-1-AP

1 Publications



Basic Information

Catalog Number:

17207-1-AP

Size:

150ul, Concentration: 300 ug/ml by Nanodrop and 233 ug/ml by Bradford method using BSA as the standard;

Source:

Rabbit

Isotype:

IgG

Immunogen Catalog Number:

AG10986

GenBank Accession Number:

BC021730

GeneID (NCBI):

84569

UNIPROT ID:

Q6UWQ5

Full Name:

lysozyme-like 1

Calculated MW:

194 aa, 22 kDa

Observed MW:

22 kDa

Purification Method:

Antigen affinity purification

Recommended Dilutions:

WB 1:100-1:500

IHC 1:50-1:500

Applications

Tested Applications:

WB, IHC, ELISA

Cited Applications:

WB

Species Specificity:

human, mouse, rat

Cited Species:

human

Positive Controls:

WB : mouse testis tissue,

IHC : human testis tissue, human lung tissue, human spleen tissue

Note-IHC: suggested antigen retrieval with TE buffer pH 9.0; (*) Alternatively, antigen retrieval may be performed with citrate buffer pH 6.0

Background Information

LYZL1 (Lysozyme-like 1) is also named as LYC2 and belongs to the glycosyl hydrolase 22 family. It is involved in the hydrolysis of 1,4-beta-linkages between N-acetylmuramic acid and N-acetyl-D-glucosamine residues in a peptidoglycan and between N-acetyl-D-glucosamine residues in chitodextrins. LYZL1 has two isoforms with the molecular weight of 17 kDa and 22 kDa. The full length protein has a signal peptide of 19 amino acids and a glycosylation site. This antibody detects the N-terminal of LYZL1.

Notable Publications

Author	Pubmed ID	Journal	Application
Yueshuai Guo	31424156	Proteomics Clin Appl	WB

Storage

Storage:

Store at -20°C. Stable for one year after shipment.

Storage Buffer:

PBS with 0.02% sodium azide and 50% glycerol pH 7.3.

Aliquoting is unnecessary for -20°C storage

*** 20ul sizes contain 0.1% BSA

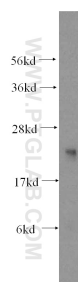
For technical support and original validation data for this product please contact:

T: 1 (888) 4PTGLAB (1-888-478-4522) (toll free in USA), or 1(312) 455-8498 (outside USA)

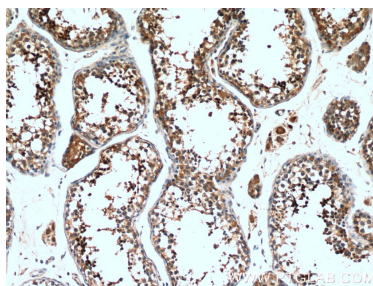
E: proteintech@ptglab.com
W: ptglab.com

This product is exclusively available under Proteintech Group brand and is not available to purchase from any other manufacturer.

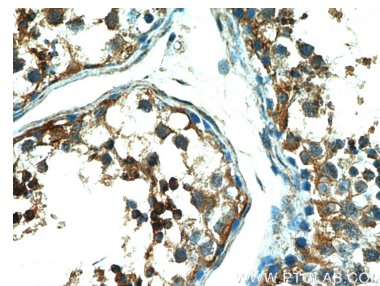
Selected Validation Data



mouse testis tissue were subjected to SDS PAGE followed by western blot with 17207-1-AP (LYZL1 antibody) at dilution of 1:300 incubated at room temperature for 1.5 hours.



Immunohistochemical analysis of paraffin-embedded human testis tissue slide using 17207-1-AP (LYZL1 Antibody) at dilution of 1:200 (under 10x lens).



Immunohistochemical analysis of paraffin-embedded human testis tissue slide using 17207-1-AP (LYZL1 Antibody) at dilution of 1:200 (under 40x lens).