

For Research Use Only

RBM11 Polyclonal antibody

Catalog Number: 17220-1-AP

Featured Product

1 Publications



Basic Information

Catalog Number:
17220-1-AP

Size:
150ul , Concentration: 200 µg/ml by Nanodrop and 167 µg/ml by Bradford method using BSA as the standard;

Source:
Rabbit

Isotype:
IgG

Immunogen Catalog Number:
AG11040

GenBank Accession Number:
BC030196

GeneID (NCBI):
54033

Full Name:
RNA binding motif protein 11

Calculated MW:
281 aa, 32 kDa

Observed MW:
35 kDa

Purification Method:
Antigen affinity purification

Recommended Dilutions:
WB 1:200-1:1000
IP 0.5-4.0 ug for IP and 1:200-1:1000 for WB
IF 1:50-1:500

Applications

Tested Applications:
IF, IP, WB, ELISA

Cited Applications:
WB

Species Specificity:
human

Cited Species:
human

Positive Controls:

WB : HEK-293 cells,

IP : HEK-293 cells,

IF : HEK-293 cells,

Background Information

Notable Publications

Author	Pubmed ID	Journal	Application
Chunhong Fu	34434291	Dis Markers	WB

Storage

Storage:

Store at -20°C. Stable for one year after shipment.

Storage Buffer:

PBS with 0.02% sodium azide and 50% glycerol pH 7.3.

Aliquoting is unnecessary for -20°C storage

*** 20ul sizes contain 0.1% BSA

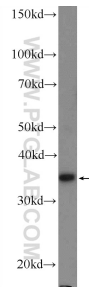
For technical support and original validation data for this product please contact:

T: 1 (888) 4PTGLAB (1-888-478-4522) (toll free in USA), or 1(312) 455-8498 (outside USA)

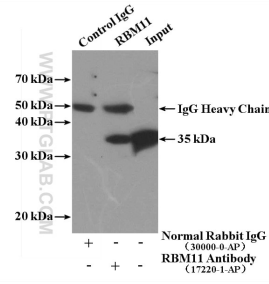
E: proteintech@ptglab.com
W: ptglab.com

This product is exclusively available under Proteintech Group brand and is not available to purchase from any other manufacturer.

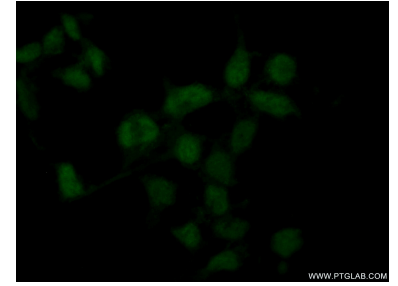
Selected Validation Data



HEK-293 cells were subjected to SDS PAGE followed by western blot with 17220-1-AP (RBM11 Antibody) at dilution of 1:300 incubated at room temperature for 1.5 hours.



IP Result of anti-RBM11 (IP:17220-1-AP, 4ug; Detection:17220-1-AP 1:300) with HEK-293 cells lysate 3000ug.



Immunofluorescent analysis of (10% Formaldehyde) fixed HEK-293 cells using 17220-1-AP (RBM11 antibody) at dilution of 1:50 and Alexa Fluor 488-conjugated AffiniPure Goat Anti-Rabbit IgG(H+L).