

For Research Use Only

KLHL18 Polyclonal antibody

Catalog Number: 17229-1-AP

Featured Product

2 Publications



Basic Information

Catalog Number:

17229-1-AP

Size:

150ul, Concentration: 300 ug/ml by Nanodrop;

Source:

Rabbit

Isotype:

IgG

Immunogen Catalog Number:

AG11070

GenBank Accession Number:

BC032620

GeneID (NCBI):

23276

UNIPROT ID:

O94889

Full Name:

kelch-like 18 (Drosophila)

Calculated MW:

509 aa, 56 kDa

Observed MW:

63 kDa, 56 kDa

Purification Method:

Antigen affinity purification

Recommended Dilutions:

WB 1:500-1:3000

IHC 1:20-1:200

Applications

Tested Applications:

WB, IHC, ELISA

Cited Applications:

WB, IHC

Species Specificity:

human, mouse, rat

Cited Species:

human

Note-IHC: suggested antigen retrieval with TE buffer pH 9.0; (*) Alternatively, antigen retrieval may be performed with citrate buffer pH 6.0

Positive Controls:

WB : HepG2 cells, COLO 320 cells, HEK-293 cells, HeLa cells, HL-60 cells, mouse brain tissue

IHC : human colon tissue, human brain tissue

Notable Publications

Author	Pubmed ID	Journal	Application
Xizi Jiang	33292627	Cell Biosci	IHC
Moghe Saili S	23213400	Biol Open	WB

Storage

Storage:

Store at -20°C. Stable for one year after shipment.

Storage Buffer:

PBS with 0.02% sodium azide and 50% glycerol pH 7.3.

Aliquoting is unnecessary for -20°C storage

*** 20ul sizes contain 0.1% BSA

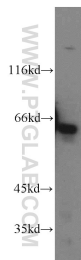
For technical support and original validation data for this product please contact:

T: 1 (888) 4PTGLAB (1-888-478-4522) (toll free in USA), or 1(312) 455-8498 (outside USA)

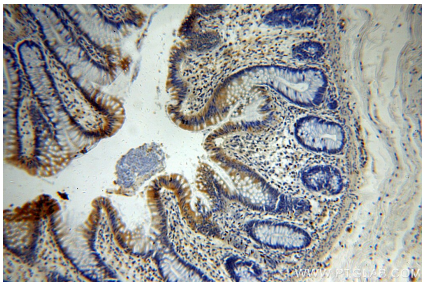
E: proteintech@ptglab.com
W: ptglab.com

This product is exclusively available under Proteintech Group brand and is not available to purchase from any other manufacturer.

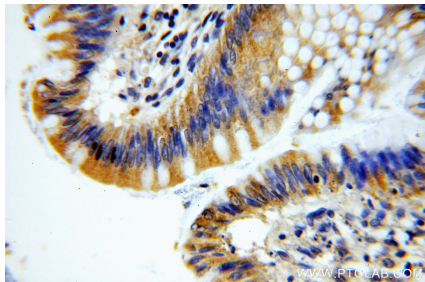
Selected Validation Data



HepG2 cells were subjected to SDS PAGE followed by western blot with 17229-1-AP (KLHL18 antibody) at dilution of 1:600 incubated at room temperature for 1.5 hours.



Immunohistochemical analysis of paraffin-embedded human colon using 17229-1-AP (KLHL18 antibody) at dilution of 1:100 (under 10x lens).



Immunohistochemical analysis of paraffin-embedded human colon using 17229-1-AP (KLHL18 antibody) at dilution of 1:100 (under 40x lens).