

For Research Use Only

SEC16B Polyclonal antibody

Catalog Number: 17245-1-AP



Basic Information

Catalog Number: 17245-1-AP	GenBank Accession Number: BC009106	Purification Method: Antigen affinity purification
Size: 150ul , Concentration: 400 ug/ml by Nanodrop and 253 ug/ml by Bradford method using BSA as the standard;	GeneID (NCBI): 89866	Recommended Dilutions: WB 1:500-1:1000 IHC 1:50-1:500
Source: Rabbit	UNIPROT ID: Q96JE7	
Isotype: IgG	Full Name: SEC16 homolog B (S. cerevisiae)	
Immunogen Catalog Number: AG11173	Calculated MW: 71 kDa, 117 kDa	
	Observed MW: 60-70 kDa	

Applications

Tested Applications: WB, IHC, ELISA	Positive Controls:
Species Specificity: human, mouse	WB : mouse pancreas tissue, IHC : human pancreas cancer tissue,

Note-IHC: suggested antigen retrieval with **TE buffer pH 9.0; (*) Alternatively, antigen retrieval may be performed with citrate buffer pH 6.0**

Background Information

SEC16B also known as LZTR2, RGPR-p117, is a mammalian homolog of S. cerevisiae Sec16 that is required for organization of transitional endoplasmic reticulum (ER) sites and protein export (PMID: 17192411). SEC16B regulates the transport of peroxisomal biogenesis factors PEX3 and PEX16 from the ER to peroxisomes (PMID:21768384). SEC16B may be involved in human obesity to possess an association between single nucleotide polymorphisms and different measures of obesity (PMID: 28413634).

Storage

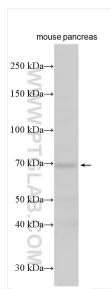
Storage:
Store at -20°C. Stable for one year after shipment.
Storage Buffer:
PBS with 0.02% sodium azide and 50% glycerol pH 7.3.
Aliquoting is unnecessary for -20°C storage

***** 20ul sizes contain 0.1% BSA**

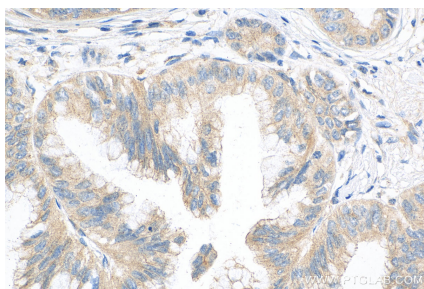
For technical support and original validation data for this product please contact:
T: 1 (888) 4PTGLAB (1-888-478-4522) (toll free in USA), or 1(312) 455-8498 (outside USA)
E: proteintech@ptglab.com
W: ptglab.com

This product is exclusively available under Proteintech Group brand and is not available to purchase from any other manufacturer.

Selected Validation Data



mouse pancreas tissue was subjected to SDS PAGE followed by western blot with 17245-1-AP (SEC16B antibody) at dilution of 1:600 incubated at room temperature for 1.5 hours.



Immunohistochemical analysis of paraffin-embedded human pancreas cancer tissue slide using 17245-1-AP (SEC16B antibody) at dilution of 1:200 (under 10x lens). Heat mediated antigen retrieval with Tris-EDTA buffer (pH 9.0).