

For Research Use Only

ATPB Polyclonal antibody

Catalog Number: 17247-1-AP

Featured Product

63 Publications



Basic Information

Catalog Number:

17247-1-AP

Size:

150ul, Concentration: 450 ug/ml by Nanodrop;

Source:

Rabbit

Isotype:

IgG

Immunogen Catalog Number:

AG11177

GenBank Accession Number:

BC016512

GeneID (NCBI):

506

UNIPROT ID:

P06576

Full Name:

ATP synthase, H⁺ transporting, mitochondrial F1 complex, beta polypeptide

Calculated MW:

529 aa, 57 kDa

Observed MW:

45-57 kDa

Purification Method:

Antigen affinity purification

Recommended Dilutions:

WB 1:1000-1:6000

IP 0.5-4.0 ug for 1.0-3.0 mg of total protein lysate

IHC 1:300-1:1200

IF/ICC 1:50-1:500

Applications

Tested Applications:

WB, IHC, IF/ICC, IP, ELISA

Cited Applications:

WB, IHC, IF, IP, CoIP

Species Specificity:

human, mouse, rat

Cited Species:

human, mouse, rat

Positive Controls:

WB: HEK-293T cells, HeLa cells, HT-29 cells, HepG2 cells, mouse brain tissue

IP: mouse heart tissue,

IHC: human colon,

IF/ICC: HepG2 cells, HeLa cells

Note-IHC: suggested antigen retrieval with TE buffer pH 9.0; (*) Alternatively, antigen retrieval may be performed with citrate buffer pH 6.0

Background Information

ATP5B, also named as ATPMB and ATPSB, belongs to the ATPase alpha/beta chains family. It is a high affinity HDL receptor for apolipoprotein A1. ATP5B is a subunit of mitochondrial ATP synthase (F1F0 ATP synthase or Complex V). ATP5B has a calculated molecular mass of 57 kDa and ~5 kDa transit peptide can be removed in the mature form.

Notable Publications

Author	Pubmed ID	Journal	Application
Bettina Rieger	34595823	EMBO Rep	WB
Jiayu Song	36193064	Oxid Med Cell Longev	WB
Yutong Shang	36104602	Acta Neuropathol	WB

Storage

Storage:

Store at -20°C. Stable for one year after shipment.

Storage Buffer:

PBS with 0.02% sodium azide and 50% glycerol, pH7.3

Aliquoting is unnecessary for -20°C storage

*** 20ul sizes contain 0.1% BSA

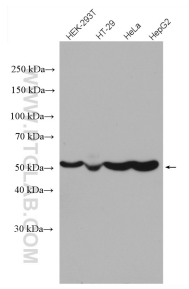
For technical support and original validation data for this product please contact:

T: 1 (888) 4PTGLAB (1-888-478-4522) (toll free in USA), or 1(312) 455-8498 (outside USA)

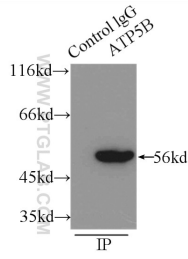
E: proteintech@ptglab.com
W: ptglab.com

This product is exclusively available under Proteintech Group brand and is not available to purchase from any other manufacturer.

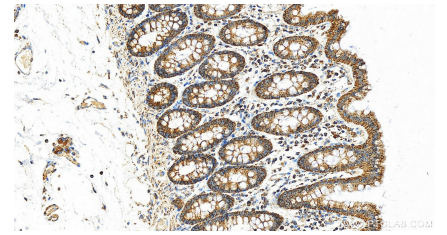
Selected Validation Data



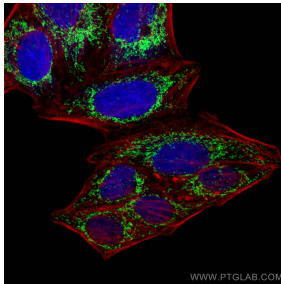
Various lysates were subjected to SDS PAGE followed by western blot with 17247-1-AP (ATPB antibody) at dilution of 1:3000 incubated at room temperature for 1.5 hours.



IP result of anti-ATPB (IP: 17247-1-AP, 3 μg; Detection: 17247-1-AP 1:500) with mouse heart tissue lysate 7500 μg.



Immunohistochemical analysis of paraffin-embedded human colon slide using 17247-1-AP (ATPB antibody) at dilution of 1:600 (under 20x lens). Heat mediated antigen retrieval with Tris-EDTA buffer (pH 9.0).



Immunofluorescent analysis of (4% PFA) fixed HepG2 cells using ATPB antibody (17247-1-AP) at dilution of 1:200 and Multi-rAb Coralite® Plus 488-Goat Anti-Rabbit Recombinant Secondary Antibody (H+L) (RGAR002), CL594-Phalloidin (red).