

For Research Use Only

# GPD1L Polyclonal antibody

Catalog Number: 17263-1-AP **6 Publications**



## Basic Information

<b>Catalog Number:</b> 17263-1-AP	<b>GenBank Accession Number:</b> BC028726	<b>Purification Method:</b> Antigen affinity purification
<b>Size:</b> 150ul , Concentration: 500 µg/ml by Nanodrop and 267 µg/ml by Bradford method using BSA as the standard;	<b>GeneID (NCBI):</b> 23171	<b>Recommended Dilutions:</b> WB 1:500-1:2000
<b>Source:</b> Rabbit	<b>Full Name:</b> glycerol-3-phosphate dehydrogenase 1-like	
<b>Isotype:</b> IgG	<b>Calculated MW:</b> 351 aa, 38 kDa	
<b>Immunogen Catalog Number:</b> AG10977	<b>Observed MW:</b> 38-40 kDa	

## Applications

<b>Tested Applications:</b> WB, ELISA	<b>Positive Controls:</b> WB : mouse heart tissue, human skeletal muscle tissue, human brain tissue, HEK-293 cells
<b>Cited Applications:</b> WB	
<b>Species Specificity:</b> human, mouse, rat	
<b>Cited Species:</b> human, rat, mouse	

## Background Information

Glycerol-3-phosphate dehydrogenase 1-like (GPD1L) is encoded by the gene GPD1L, which is located on chromosome 3p22.3. GPD1L is responsible for catalyzing the conversion of sn-glycerol 3-phosphate to glycerone phosphate. GPD1L displayed a dysregulated state in a wide variety of cancers.

## Notable Publications

Author	Pubmed ID	Journal	Application
Ye Du	32908121	Cell Death Dis	WB
Hongting Hao	36064558	J Transl Med	WB
Shiqi Wu	35749365	Proc Natl Acad Sci U S A	WB

## Storage

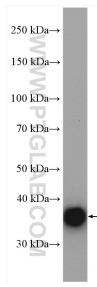
**Storage:**  
Store at -20°C. Stable for one year after shipment.  
**Storage Buffer:**  
PBS with 0.02% sodium azide and 50% glycerol pH 7.3.  
Aliquoting is unnecessary for -20°C storage

\*\*\* 20ul sizes contain 0.1% BSA

For technical support and original validation data for this product please contact:  
T: 1 (888) 4PTGLAB (1-888-478-4522) (toll free in USA), or 1(312) 455-8498 (outside USA)  
E: proteintech@ptglab.com  
W: ptglab.com

This product is exclusively available under Proteintech Group brand and is not available to purchase from any other manufacturer.

## Selected Validation Data



mouse heart tissue were subjected to SDS PAGE followed by western blot with 17263-1-AP (GPD1L antibody) at dilution of 1:1000 incubated at room temperature for 1.5 hours.