

For Research Use Only

# MITD1 Polyclonal antibody

Catalog Number: 17264-1-AP

Featured Product

4 Publications



## Basic Information

### Catalog Number:

17264-1-AP

### Size:

150ul, Concentration: 300 ug/ml by Nanodrop and 260 ug/ml by Bradford method using BSA as the standard;

### Source:

Rabbit

### Isotype:

IgG

### Immunogen Catalog Number:

AG10998

### GenBank Accession Number:

BC018453

### GeneID (NCBI):

129531

### UNIPROT ID:

Q8WV92

### Full Name:

MIT, microtubule interacting and transport, domain containing 1

### Calculated MW:

249 aa, 29 kDa

### Observed MW:

29 kDa

### Purification Method:

Antigen affinity purification

### Recommended Dilutions:

WB 1:1000-1:5000

IP 0.5-4.0 ug for 1.0-3.0 mg of total protein lysate

IHC 1:50-1:500

IF/ICC 1:400-1:1600

## Applications

### Tested Applications:

WB, IHC, IF/ICC, IP, ELISA

### Cited Applications:

WB, IHC, IF, IP

### Species Specificity:

human, mouse, rat

### Cited Species:

human

**Note-IHC: suggested antigen retrieval with TE buffer pH 9.0; (\*) Alternatively, antigen retrieval may be performed with citrate buffer pH 6.0**

### Positive Controls:

WB : HeLa cells, HepG2 cells, Jurkat cells, MOLT-4 cells, mouse kidney tissue, rat kidney tissue, rat brain tissue

IP : HeLa cells,

IHC : human kidney tissue, human liver tissue

IF/ICC : A549 cells,

## Notable Publications

Author	Pubmed ID	Journal	Application
Shiqiang Dong	36291174	Cells	WB,IHC
Yapeng Wang	36732658	Oncogene	WB,IHC,IP
Hadders Michael A MA	23045692	Proc Natl Acad Sci U S A	WB

## Storage

### Storage:

Store at -20°C. Stable for one year after shipment.

### Storage Buffer:

PBS with 0.02% sodium azide and 50% glycerol pH 7.3.

Aliquoting is unnecessary for -20°C storage

\*\*\* 20ul sizes contain 0.1% BSA

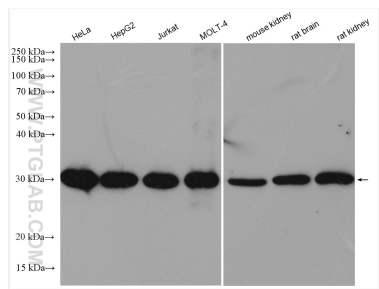
For technical support and original validation data for this product please contact:

T: 1 (888) 4PTGLAB (1-888-478-4522) (toll free in USA), or 1(312) 455-8498 (outside USA)

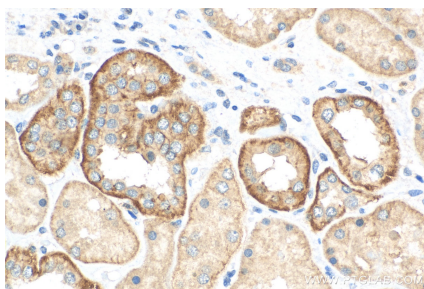
E: [proteintech@ptglab.com](mailto:proteintech@ptglab.com)  
W: [ptglab.com](http://ptglab.com)

This product is exclusively available under Proteintech Group brand and is not available to purchase from any other manufacturer.

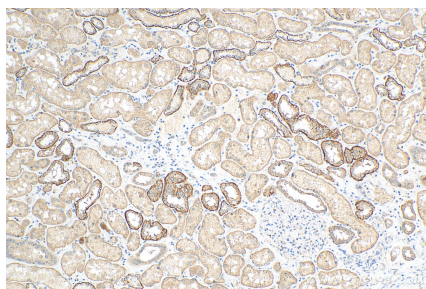
Selected Validation Data



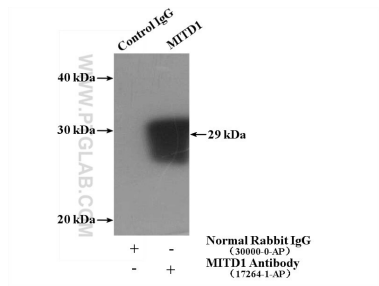
Various lysates were subjected to SDS PAGE followed by western blot with 17264-1-AP (MITD1 antibody) at dilution of 1:2500 incubated at room temperature for 1.5 hours.



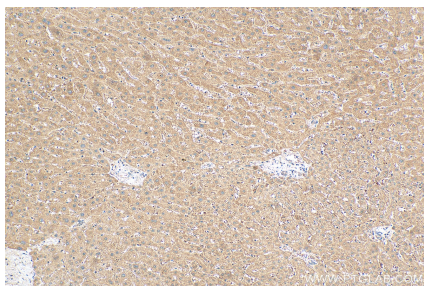
Immunohistochemical analysis of paraffin-embedded human kidney tissue slide using 17264-1-AP (MITD1 antibody) at dilution of 1:200 (under 40x lens). Heat mediated antigen retrieval with Tris-EDTA buffer (pH 9.0).



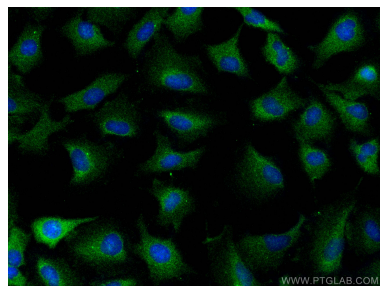
Immunohistochemical analysis of paraffin-embedded human kidney tissue slide using 17264-1-AP (MITD1 antibody) at dilution of 1:200 (under 10x lens). Heat mediated antigen retrieval with Tris-EDTA buffer (pH 9.0).



IP result of anti-MITD1 (IP: 17264-1-AP, 4ug; Detection: 17264-1-AP 1:500) with HeLa cells lysate 1080ug.



Immunohistochemical analysis of paraffin-embedded human liver tissue slide using 17264-1-AP (MITD1 antibody) at dilution of 1:200 (under 10x lens). Heat mediated antigen retrieval with Tris-EDTA buffer (pH 9.0).



Immunofluorescent analysis of (-20°C Methanol) fixed A549 cells using MITD1 antibody (17264-1-AP) at dilution of 1:800 and CoraLite®488-Conjugated Goat Anti-Rabbit IgG(H+L) (SA00013-2).