

For Research Use Only

TEX11 Polyclonal antibody

Catalog Number: 17266-1-AP

Featured Product

1 Publications



Basic Information

| | | |
|---|--|--|
| Catalog Number: 17266-1-AP | GenBank Accession Number: BC036016 | Purification Method: Antigen affinity purification |
| Size: 150ul , Concentration: 900 µg/ml by Nanodrop; | GeneID (NCBI): 56159 | Recommended Dilutions: WB 1:500-1:2000 |
| Source: Rabbit | Full Name: testis expressed 11 | |
| Isotype: IgG | Calculated MW: 925 aa, 107 kDa | |
| Immunogen Catalog Number: AG11012 | Observed MW: 66-72 kDa | |

Applications

| | |
|--|---|
| Tested Applications: WB, ELISA | Positive Controls: WB : LNCaP cells, DU 145 cells |
| Cited Applications: IHC, WB | |
| Species Specificity: human | |
| Cited Species: human | |

Background Information

Testis-expressed 11 (TEX11) is an X-chromosome-encoded germ-cell-specific protein that is expressed most abundantly in spermatogonia and early spermatocytes in the testes. The TEX11 protein was found to form discrete foci along the synaptonemal complexes (SCs) on meiotic chromosomes and was shown to be essential for meiosis in males.

Notable Publications

| Author | Pubmed ID | Journal | Application |
|----------------|-----------|----------|-------------|
| Xiaodong Zhang | 36258021 | Oncogene | WB,IHC |

Storage

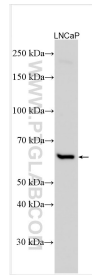
Storage:
Store at -20°C. Stable for one year after shipment.
Storage Buffer:
PBS with 0.02% sodium azide and 50% glycerol pH 7.3.
Aliquoting is unnecessary for -20°C storage

*** 20ul sizes contain 0.1% BSA

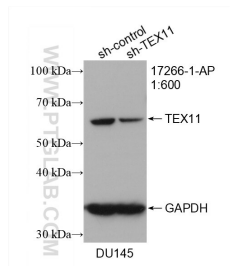
For technical support and original validation data for this product please contact:
T: 1 (888) 4PTGLAB (1-888-478-4522) (toll free in USA), or 1(312) 455-8498 (outside USA)
E: proteintech@ptglab.com
W: ptglab.com

This product is exclusively available under Proteintech Group brand and is not available to purchase from any other manufacturer.

Selected Validation Data



LNCaP cells lysates were subjected to SDS PAGE followed by western blot with 17266-1-AP (TEX11 antibody) at dilution of 1:1000 incubated at room temperature for 1.5 hours.



WB result of TEX11 antibody (17266-1-AP; 1:600; incubated at room temperature for 1.5 hours) with sh-Control and sh-TEX11 transfected DU 145 cells.