

For Research Use Only

# MT1M Polyclonal antibody

Catalog Number: 17281-1-AP **5 Publications**



## Basic Information

<b>Catalog Number:</b> 17281-1-AP	<b>GenBank Accession Number:</b> BC028280	<b>Purification Method:</b> Antigen affinity purification
<b>Size:</b> 150ul , Concentration: 850 ug/ml by Nanodrop and 467 ug/ml by Bradford method using BSA as the standard;	<b>GeneID (NCBI):</b> 4499	<b>Recommended Dilutions:</b> IHC 1:50-1:500
<b>Source:</b> Rabbit	<b>UNIPROT ID:</b> Q8N339	
<b>Isotype:</b> IgG	<b>Full Name:</b> metallothionein 1M	
<b>Immunogen Catalog Number:</b> AG11048	<b>Calculated MW:</b> 61 aa, 6 kDa	

## Applications

<b>Tested Applications:</b> IHC, ELISA	<b>Positive Controls:</b> IHC : human kidney tissue,
<b>Cited Applications:</b> WB, IF	
<b>Species Specificity:</b> human	
<b>Cited Species:</b> human, mouse	
<b>Note-IHC: suggested antigen retrieval with TE buffer pH 9.0; (*) Alternatively, antigen retrieval may be performed with citrate buffer pH 6.0</b>	

## Notable Publications

Author	Pubmed ID	Journal	Application
Jianqiang Zhu	35533959	Environ Pollut	WB,IF
Rhiannon V McNeill	30884885	Int J Mol Sci	WB
Wenjing Xiao	35253629	Autophagy	WB

## Storage

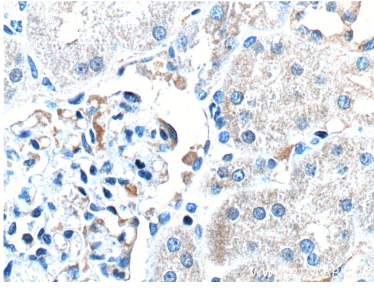
**Storage:**  
Store at -20°C. Stable for one year after shipment.  
**Storage Buffer:**  
PBS with 0.02% sodium azide and 50% glycerol pH 7.3.  
Aliquoting is unnecessary for -20°C storage

\*\*\* 20ul sizes contain 0.1% BSA

For technical support and original validation data for this product please contact:  
T: 1 (888) 4PTGLAB (1-888-478-4522) (toll free in USA), or 1(312) 455-8498 (outside USA)  
E: [proteintech@ptglab.com](mailto:proteintech@ptglab.com)  
W: [ptglab.com](http://ptglab.com)

This product is exclusively available under Proteintech Group brand and is not available to purchase from any other manufacturer.

## Selected Validation Data



Immunohistochemical analysis of paraffin-embedded human kidney tissue slide using 17281-1-AP (MT1M Antibody) at dilution of 1:50 (under 40x lens).