

For Research Use Only

EIF4E3 Polyclonal antibody

Catalog Number: 17282-1-AP

Featured Product

9 Publications



Basic Information

Catalog Number: 17282-1-AP	GenBank Accession Number: BC031289	Purification Method: Antigen affinity purification
Size: 150ul , Concentration: 300 µg/ml by Nanodrop and 273 µg/ml by Bradford method using BSA as the standard;	GeneID (NCBI): 317649	Recommended Dilutions: WB 1:500-1:3000 IF 1:10-1:100
Source: Rabbit	Full Name: eukaryotic translation initiation factor 4E family member 3	
Isotype: IgG	Calculated MW: 24 kDa	
Immunogen Catalog Number: AG11056	Observed MW: 24-30 kDa	

Applications

Tested Applications: IF, WB, ELISA	Positive Controls:
Cited Applications: IF, IHC, IP, WB	WB : HeLa cells, A549 cells, mouse heart tissue, HepG2 cells
Species Specificity: human, mouse, rat	IF : HeLa cells,
Cited Species: human, mouse	

Background Information

EIF4E3, also known as Eukaryotic translation initiation factor 4E type 3, is a 224 amino acid protein, which recognizes and binds the 7-methylguanosine-containing mRNA cap during an early step in the initiation of protein synthesis. EIF4E3 acts as a tissue-specific tumor suppressor. For instance, eIF4E3 inhibits expression of both mRNA export and translation targets of eIF4E1, consistent with its nuclear and cytoplasmic localization. Importantly, eIF4E3 overexpression represses oncogenic transformation. (PMID: 23587918). EIF4E3 exists two isoforms with MV 24 kDa and 13 kDa.

Notable Publications

Author	Pubmed ID	Journal	Application
Jun Pang	32953883	Biomed Res Int	WB
Nourhan Abdelfattah	30382096	Nat Commun	WB,IF
Irene Riz	27626179	Oncotarget	WB

Storage

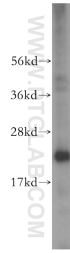
Storage:
Store at -20°C. Stable for one year after shipment.
Storage Buffer:
PBS with 0.02% sodium azide and 50% glycerol pH 7.3.
Aliquoting is unnecessary for -20°C storage

*** 20ul sizes contain 0.1% BSA

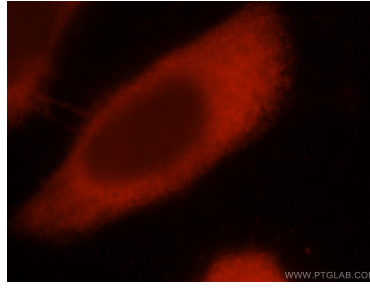
For technical support and original validation data for this product please contact:
T: 1 (888) 4PTGLAB (1-888-478-4522) (toll free in USA), or 1(312) 455-8498 (outside USA)
E: proteintech@ptglab.com
W: ptglab.com

This product is exclusively available under Proteintech Group brand and is not available to purchase from any other manufacturer.

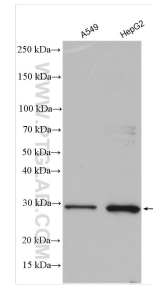
Selected Validation Data



HeLa cells were subjected to SDS PAGE followed by western blot with 17282-1-AP (EIF4E3 antibody) at dilution of 1:500 incubated at room temperature for 1.5 hours.



Immunofluorescent analysis of HeLa cells, using EIF4E3 antibody 17282-1-AP at 1:25 dilution and Rhodamine-labeled goat anti-rabbit IgG (red).



Various lysates were subjected to SDS PAGE followed by western blot with 17282-1-AP (EIF4E3 antibody) at dilution of 1:500 incubated at room temperature for 1.5 hours.