

For Research Use Only

# TRMT10A Polyclonal antibody, PBS Only

Catalog Number: 17294-1-PBS



## Basic Information

**Catalog Number:**

17294-1-PBS

**Size:**

100ug, Concentration: 1 mg/ml by Nanodrop;

**Source:**

Rabbit

**Isotype:**

IgG

**Immunogen Catalog Number:**

AG11172

**GenBank Accession Number:**

BC028373

**GeneID (NCBI):**

93587

**UNIPROT ID:**

Q8TBZ6

**Full Name:**

RNA (guanine-9-) methyltransferase domain containing 2

**Calculated MW:**

339 aa, 40 kDa

**Observed MW:**

40 kDa

**Purification Method:**

Antigen affinity purification

## Applications

**Tested Applications:**

WB, IP, Indirect ELISA

**Species Specificity:**

human, mouse, rat

## Background Information

TRMT10A is a tRNA methyltransferase responsible for catalyzing the formation of N1-methylguanosine (m1G) at position 9 (m1G9) in tRNAs. Deficiencies in TRMT10A function have been linked to developmental disorders, including intellectual disability and microcephaly.

## Storage

**Storage:**

Store at -80°C.

**Storage Buffer:**

PBS only, pH7.3

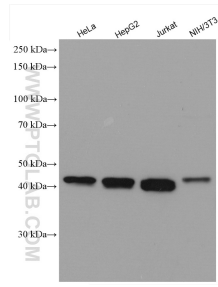
For technical support and original validation data for this product please contact:

T: 1 (888) 4PTGLAB (1-888-478-4522) (toll free in USA), or 1(312) 455-8498 (outside USA)

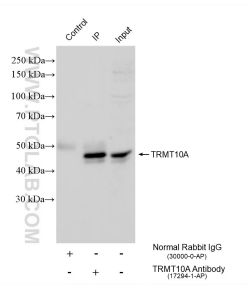
E: [proteintech@ptglab.com](mailto:proteintech@ptglab.com)  
W: [ptglab.com](http://ptglab.com)

**This product is exclusively available under Proteintech Group brand and is not available to purchase from any other manufacturer.**

## Selected Validation Data



Various lysates were subjected to SDS PAGE followed by western blot with 17294-1-AP (TRMT10A antibody) at dilution of 1:2000 incubated at room temperature for 1.5 hours. This data was developed using the same antibody clone with 17294-1-PBS in a different storage buffer formulation.



IP result of anti-TRMT10A (IP:17294-1-AP, 4ug; Detection:17294-1-AP 1:3000) with HeLa cells lysate 1200 ug. This data was developed using the same antibody clone with 17294-1-PBS in a different storage buffer formulation.