

For Research Use Only

# BXDC2 Polyclonal antibody

Catalog Number: 17295-1-AP



## Basic Information

**Catalog Number:**  
17295-1-AP

**Size:**  
150ul, Concentration: 500 µg/ml by Nanodrop and 220 µg/ml by Bradford method using BSA as the standard;

**Source:**  
Rabbit

**Isotype:**  
IgG

**Immunogen Catalog Number:**  
AG11174

**GenBank Accession Number:**  
BC001546

**GeneID (NCBI):**  
55299

**Full Name:**  
brix domain containing 2

**Calculated MW:**  
353 aa, 41 kDa

**Observed MW:**  
41 kDa

**Purification Method:**  
Antigen affinity purification

**Recommended Dilutions:**  
WB 1:500-1:3000  
IP 0.5-4.0 ug for IP and 1:500-1:1000 for WB  
IHC 1:20-1:200  
IF 1:10-1:100

## Applications

**Tested Applications:**  
IF, IHC, IP, WB, ELISA

**Species Specificity:**  
human, mouse, rat

**Note-IHC: suggested antigen retrieval with TE buffer pH 9.0; (\*) Alternatively, antigen retrieval may be performed with citrate buffer pH 6.0**

**Positive Controls:**

**WB:** human liver tissue, HEK-293 cells, HeLa cells

**IP:** HEK-293 cells,

**IHC:** human pancreas tissue,

**IF:** HepG2 cells,

## Background Information

### Storage

**Storage:**

Store at -20°C. Stable for one year after shipment.

**Storage Buffer:**

PBS with 0.02% sodium azide and 50% glycerol pH 7.3.

Aliquoting is unnecessary for -20°C storage

\*\*\* 20ul sizes contain 0.1% BSA

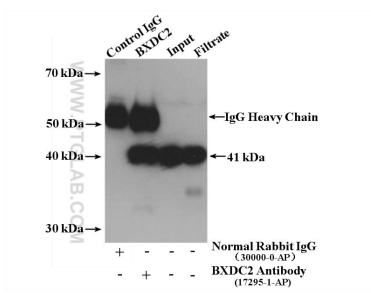
For technical support and original validation data for this product please contact:

T: 1 (888) 4PTGLAB (1-888-478-4522) (toll free in USA), or 1(312) 455-8498 (outside USA)

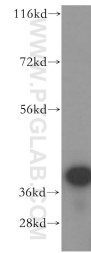
E: [proteintech@ptglab.com](mailto:proteintech@ptglab.com)  
W: [ptglab.com](http://ptglab.com)

**This product is exclusively available under Proteintech Group brand and is not available to purchase from any other manufacturer.**

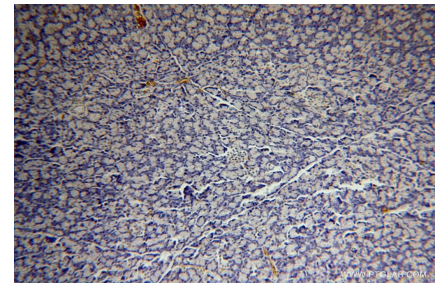
## Selected Validation Data



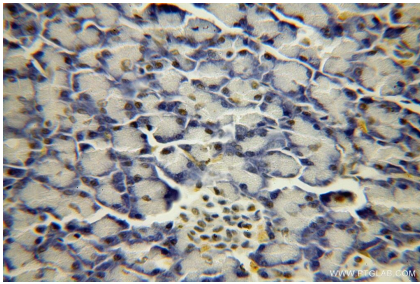
IP result of anti-BXDC2 (IP:17295-1-AP, 4ug; Detection:17295-1-AP 1:700) with HEK-293 cells lysate 2400 ug.



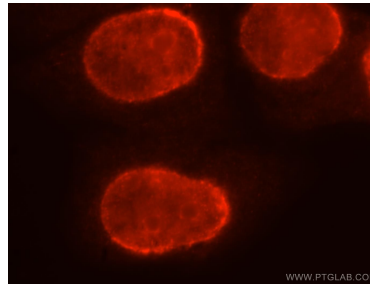
human liver tissue were subjected to SDS PAGE followed by western blot with 17295-1-AP (BXDC2 antibody) at dilution of 1:500 incubated at room temperature for 1.5 hours.



Immunohistochemical analysis of paraffin-embedded human pancreas using 17295-1-AP (BXDC2 antibody) at dilution of 1:100 (under 10x lens).



Immunohistochemical analysis of paraffin-embedded human pancreas using 17295-1-AP (BXDC2 antibody) at dilution of 1:100 (under 40x lens).



Immunofluorescent analysis of HepG2 cells, using BXDC2 antibody 17295-1-AP at 1:25 dilution and Rhodamine-labeled goat anti-rabbit IgG (red).