

For Research Use Only

MRPL42 Polyclonal antibody

Catalog Number: 17300-1-AP



Basic Information

Catalog Number: 17300-1-AP	GenBank Accession Number: BC040240	Purification Method: Antigen affinity purification
Size: 150ul , Concentration: 500 ug/ml by Nanodrop;	GeneID (NCBI): 28977	Recommended Dilutions: WB 1:500-1:3000 IHC 1:500-1:2000 IF/ICC 1:200-1:800
Source: Rabbit	UNIPROT ID: Q9Y6G3	
Isotype: IgG	Full Name: mitochondrial ribosomal protein L42	
Immunogen Catalog Number: AG11181	Calculated MW: 142 aa, 17 kDa	
	Observed MW: 14-17 kDa	

Applications

Tested Applications: WB, IHC, IF/ICC, ELISA	Positive Controls:
Species Specificity: human	WB : HeLa cells, HepG2 cells, MCF-7 cells, Jurkat cells, PC-3 cells
Note-IHC: suggested antigen retrieval with TE buffer pH 9.0; (*) Alternatively, antigen retrieval may be performed with citrate buffer pH 6.0	IHC : human breast cancer tissue,
	IF/ICC : HeLa cells,

Storage

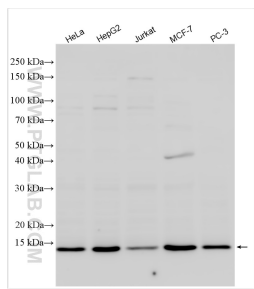
Storage:
Store at -20°C. Stable for one year after shipment.
Storage Buffer:
PBS with 0.02% sodium azide and 50% glycerol pH 7.3.
Aliquoting is unnecessary for -20°C storage

*** 20ul sizes contain 0.1% BSA

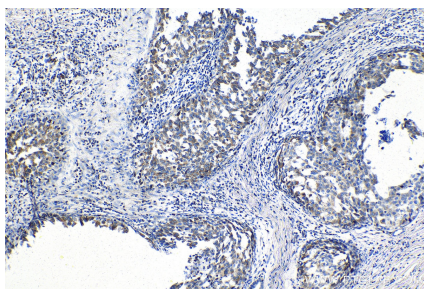
For technical support and original validation data for this product please contact:
T: 1 (888) 4PTGLAB (1-888-478-4522) (toll free in USA), or 1(312) 455-8498 (outside USA)
E: proteintech@ptglab.com
W: ptglab.com

This product is exclusively available under Proteintech Group brand and is not available to purchase from any other manufacturer.

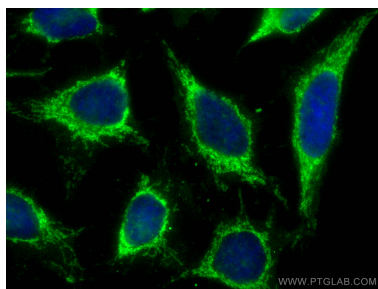
Selected Validation Data



Various lysates were subjected to SDS PAGE followed by western blot with 17300-1-AP (MRPL42 antibody) at dilution of 1:1500 incubated at room temperature for 1.5 hours.



Immunohistochemical analysis of paraffin-embedded human breast cancer tissue slide using 17300-1-AP (MRPL42 antibody) at dilution of 1:1000 (under 10x lens).



Immunofluorescent analysis of (-20°C Methanol) fixed HeLa cells using MRPL42 antibody (17300-1-AP) at dilution of 1:400 and CoraLite®488-Conjugated AffiniPure Goat Anti-Rabbit IgG(H+L).