

For Research Use Only

EXD1 Polyclonal antibody

Catalog Number: 17313-1-AP

1 Publications



Basic Information

Catalog Number: 17313-1-AP	GenBank Accession Number: BC030628	Purification Method: Antigen affinity purification
Size: 150ul , Concentration: 600 ug/ml by Nanodrop and 333 ug/ml by Bradford method using BSA as the standard;	GeneID (NCBI): 161829	Recommended Dilutions: WB 1:200-1:1000 IHC 1:50-1:500 IF/ICC 1:200-1:800
Source: Rabbit	UNIPROT ID: Q8NHP7	
Isotype: IgG	Full Name: exonuclease 3'-5' domain containing 1	
Immunogen Catalog Number: AG11282	Calculated MW: 514 aa, 58 kDa	
	Observed MW: 36 kDa, 58 kDa, 75 kDa	

Applications

Tested Applications: WB, IHC, IF/ICC, ELISA	Positive Controls: WB : HeLa cells, SH-SY5Y cells
Cited Applications: WB, IF	IHC : human testis tissue,
Species Specificity: human	IF/ICC : HeLa cells,
Cited Species: mouse	
Note-IHC: suggested antigen retrieval with TE buffer pH 9.0; (*) Alternatively, antigen retrieval may be performed with citrate buffer pH 6.0	

Background Information

EXD1, also named as EXDL1, has three isoforms with MW 58 kDa, 36 kDa and 65 kDa. This antibody can recognize all these three isoforms.

Notable Publications

Author	Pubmed ID	Journal	Application
Opeyemi Olotu	36624638	Andrology	WB,IF

Storage

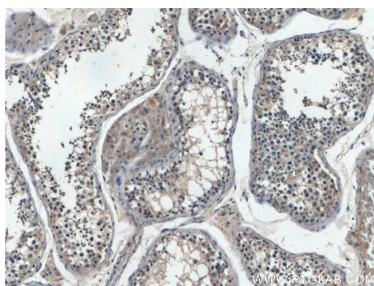
Storage:
Store at -20°C. Stable for one year after shipment.
Storage Buffer:
PBS with 0.02% sodium azide and 50% glycerol pH 7.3.
Aliquoting is unnecessary for -20°C storage

*** 20ul sizes contain 0.1% BSA

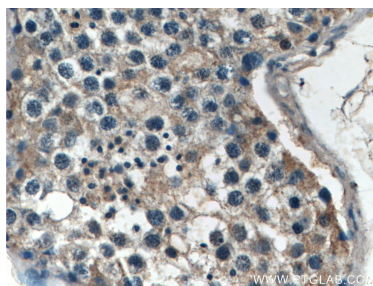
For technical support and original validation data for this product please contact:
T: 1 (888) 4PTGLAB (1-888-478-4522) (toll free in USA), or 1(312) 455-8498 (outside USA)
E: proteintech@ptglab.com
W: ptglab.com

This product is exclusively available under Proteintech Group brand and is not available to purchase from any other manufacturer.

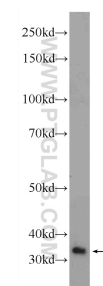
Selected Validation Data



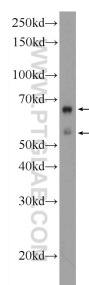
Immunohistochemical analysis of paraffin-embedded human testis tissue slide using 17313-1-AP (EXD1 antibody) at dilution of 1:200 (under 10x lens).



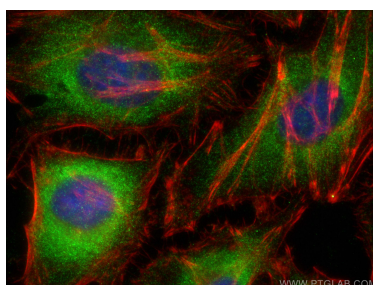
Immunohistochemical analysis of paraffin-embedded human testis tissue slide using 17313-1-AP (EXD1 antibody) at dilution of 1:200 (under 40x lens).



HeLa cells were subjected to SDS PAGE followed by western blot with 17313-1-AP (EXD1 Antibody) at dilution of 1:300 incubated at room temperature for 1.5 hours.



SH-SY5Y cells were subjected to SDS PAGE followed by western blot with 17313-1-AP (EXD1 Antibody) at dilution of 1:600 incubated at room temperature for 1.5 hours.



Immunofluorescent analysis of (-20°C Ethanol) fixed HeLa cells using EXD1 antibody (17313-1-AP) at dilution of 1:400 and CoraLite®488-Conjugated AffiniPure Goat Anti-Rabbit IgG(H+L) (SA00013-2), CL594-phalloidin (red).