

For Research Use Only

Pepsinogen I Polyclonal antibody

Catalog Number: 17330-1-AP

4 Publications



Basic Information

Catalog Number:

17330-1-AP

Size:

150ul, Concentration: 500 ug/ml by Nanodrop and 300 ug/ml by Bradford method using BSA as the standard;

Source:

Rabbit

Isotype:

IgG

Immunogen Catalog Number:

AG11309

GenBank Accession Number:

BC029055

GeneID (NCBI):

5222

UNIPROT ID:

P0DJ09

Full Name:

pepsinogen 5, group I (pepsinogen A)

Calculated MW:

388 aa, 42 kDa

Observed MW:

42 kDa

Purification Method:

Antigen affinity purification

Recommended Dilutions:

WB 1:1000-1:6000

IHC 1:50-1:500

Applications

Tested Applications:

WB, IHC, ELISA

Cited Applications:

WB, IHC, IF

Species Specificity:

human, mouse

Cited Species:

human, mouse, rat

Positive Controls:

WB : BGC-823 cells, SGC-7901 cells

IHC : mouse stomach tissue,

Note-IHC: suggested antigen retrieval with TE buffer pH 9.0; (*) Alternatively, antigen retrieval may be performed with citrate buffer pH 6.0

Background Information

Pepsinogen I belongs to the peptidase A1 family. It shows particularly broad specificity and although bonds involving phenylalanine and leucine are preferred, many others are also cleaved to some extent. The gene encodes a 388 amino acid protein with a 15 amino acid signal peptide and 46 amino acid propeptide. This antibody can recognize PGA3(pepsinogen 3), PGA4(pepsinogen 4), PGA5(pepsinogen 5).

Notable Publications

Author	Pubmed ID	Journal	Application
Pål Vange	28902909	PLoS One	IF
Wen Shi	36057966	Dev Dyn	IHC
Yu Zhang	28300576	Hum Pathol	IHC

Storage

Storage:

Store at -20°C. Stable for one year after shipment.

Storage Buffer:

PBS with 0.02% sodium azide and 50% glycerol pH 7.3.

Aliquoting is unnecessary for -20°C storage

*** 20ul sizes contain 0.1% BSA

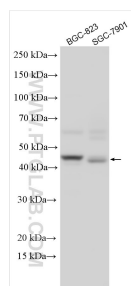
For technical support and original validation data for this product please contact:

T: 1 (888) 4PTGLAB (1-888-478-4522) (toll free in USA), or 1(312) 455-8498 (outside USA)

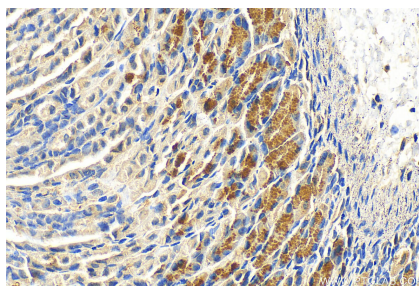
E: proteintech@ptglab.com
W: ptglab.com

This product is exclusively available under Proteintech Group brand and is not available to purchase from any other manufacturer.

Selected Validation Data



Various lysates were subjected to SDS PAGE followed by western blot with 17330-1-AP (Pepsinogen I antibody) at dilution of 1:3000 incubated at room temperature for 1.5 hours.



Immunohistochemical analysis of paraffin-embedded mouse stomach tissue slide using 17330-1-AP (Pepsinogen I antibody) at dilution of 1:200 (under 40x lens). Heat mediated antigen retrieval with Tris-EDTA buffer (pH 9.0).