

For Research Use Only

HSL Polyclonal antibody

Catalog Number: 17333-1-AP **18 Publications**



Basic Information

Catalog Number: 17333-1-AP	GenBank Accession Number: BC070041	Purification Method: Antigen affinity purification
Size: 150ul , Concentration: 900 µg/ml by Nanodrop;	GeneID (NCBI): 3991	Recommended Dilutions: WB 1:1000-1:8000 IHC 1:50-1:500
Source: Rabbit	Full Name: Lipase, hormone-sensitive	
Isotype: IgG	Calculated MW: 117 kDa	
Immunogen Catalog Number: AG11360	Observed MW: 84 kDa	

Applications

Tested Applications: IHC, WB, ELISA	Positive Controls:
Cited Applications: IF, IHC, IP, WB	WB : mouse adipose tissue, pig adipose tissue
Species Specificity: human, pig, mouse	IHC : human testis tissue,
Cited Species: human, mouse, pig	
Note-IHC: suggested antigen retrieval with TE buffer pH 9.0; (*) Alternatively, antigen retrieval may be performed with citrate buffer pH 6.0	

Background Information

LIPE, also known as HSL and LHS, belongs to the 'GDXG' lipolytic enzyme family. In adipose tissue and heart, it primarily hydrolyzes stored triglycerides to free fatty acids, while in steroidogenic tissues, it principally converts cholesteryl esters to free cholesterol for steroid hormone production. LIPE has two isoforms with the molecular mass of 117 kDa and 84 kDa.

Notable Publications

Author	Pubmed ID	Journal	Application
Yuzuru Iizuka	34588391	Exp Anim	WB
Jie Liu	36096243	Life Sci	WB
Jinzhao Zhou	35999762	Ecotoxicol Environ Saf	WB

Storage

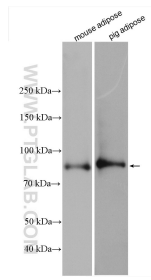
Storage:
Store at -20°C. Stable for one year after shipment.
Storage Buffer:
PBS with 0.02% sodium azide and 50% glycerol pH 7.3.
Aliquoting is unnecessary for -20°C storage

*** 20ul sizes contain 0.1% BSA

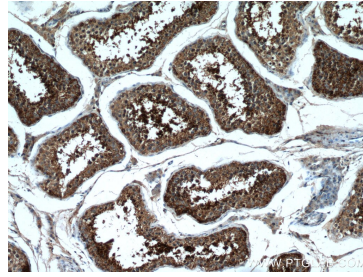
For technical support and original validation data for this product please contact:
T: 1 (888) 4PTGLAB (1-888-478-4522) (toll free in USA), or 1(312) 455-8498 (outside USA)
E: proteintech@ptglab.com
W: ptglab.com

This product is exclusively available under Proteintech Group brand and is not available to purchase from any other manufacturer.

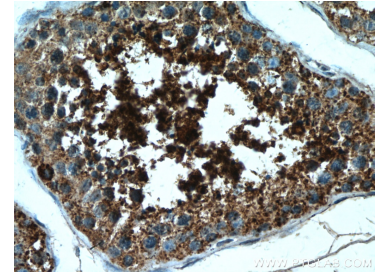
Selected Validation Data



Various lysates were subjected to SDS PAGE followed by western blot with 17333-1-AP (HSL antibody) at dilution of 1:4000 incubated at room temperature for 1.5 hours.



Immunohistochemical analysis of paraffin-embedded human testis tissue slide using 17333-1-AP (LIPE antibody) at dilution of 1:200 (under 10x lens). Heat mediated antigen retrieval with Tris-EDTA buffer (pH 9.0).



Immunohistochemical analysis of paraffin-embedded human testis tissue slide using 17333-1-AP (LIPE antibody) at dilution of 1:200 (under 40x lens). Heat mediated antigen retrieval with Tris-EDTA buffer (pH 9.0).