

For Research Use Only

PLAC1L Polyclonal antibody

Catalog Number: 17343-1-AP

2 Publications



Basic Information

Catalog Number:

17343-1-AP

Size:

150ul, Concentration: 500 ug/ml by Nanodrop and 280 ug/ml by Bradford method using BSA as the standard;

Source:

Rabbit

Isotype:

IgG

Immunogen Catalog Number:

AG11384

GenBank Accession Number:

BC036256

GeneID (NCBI):

219990

UNIPROT ID:

Q86WS3

Full Name:

placenta-specific 1-like

Calculated MW:

158 aa, 18 kDa

Observed MW:

16 kDa

Purification Method:

Antigen affinity purification

Recommended Dilutions:

WB 1:200-1:1000

IHC 1:50-1:500

Applications

Tested Applications:

WB, IHC, ELISA

Cited Applications:

WB, IF

Species Specificity:

human

Cited Species:

human, mouse

Note-IHC: suggested antigen retrieval with TE buffer pH 9.0; (*) Alternatively, antigen retrieval may be performed with citrate buffer pH 6.0

Positive Controls:

WB : human placenta tissue,

IHC : human ovary cancer tissue,

Background Information

PLAC1L, also named as TMEM122, is placenta specific protein. It is trophoblastic giant cells stain. The MW of PLAC1L is 16-18 kDa.

Notable Publications

Author	Pubmed ID	Journal	Application
Zhicheng Zheng	33975617	J Neuroinflammation	WB
Wenqi Hu	36042231	Nat Commun	IF

Storage

Storage:

Store at -20°C. Stable for one year after shipment.

Storage Buffer:

PBS with 0.02% sodium azide and 50% glycerol pH 7.3.

Aliquoting is unnecessary for -20°C storage

*** 20ul sizes contain 0.1% BSA

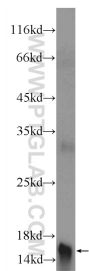
For technical support and original validation data for this product please contact:

T: 1 (888) 4PTGLAB (1-888-478-4522) (toll free in USA), or 1(312) 455-8498 (outside USA)

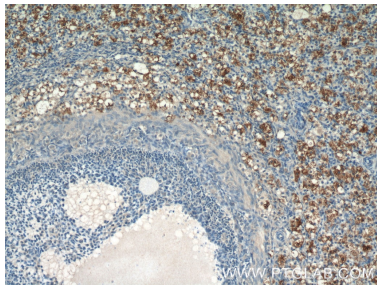
E: proteintech@ptglab.com
W: ptglab.com

This product is exclusively available under Proteintech Group brand and is not available to purchase from any other manufacturer.

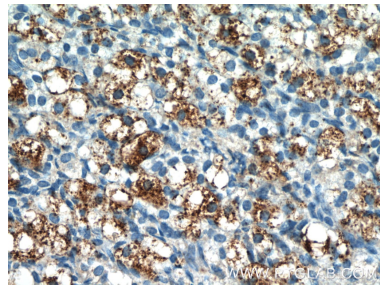
Selected Validation Data



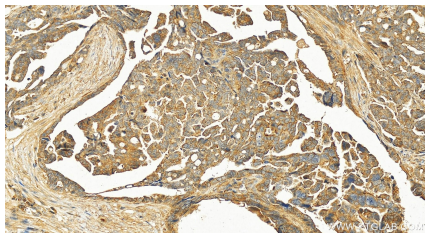
human placenta tissue were subjected to SDS PAGE followed by western blot with 17343-1-AP (PLAC1L Antibody) at dilution of 1:300 incubated at room temperature for 1.5 hours.



Immunohistochemical analysis of paraffin-embedded human ovary tissue slide using 17343-1-AP (PLAC1L Antibody) at dilution of 1:50 (under 10x lens).



Immunohistochemical analysis of paraffin-embedded human ovary tissue slide using 17343-1-AP (PLAC1L Antibody) at dilution of 1:50 (under 40x lens).



Immunohistochemical analysis of paraffin-embedded human ovarian cancer slide using 17343-1-AP (PLAC1L antibody) at dilution of 1:200 (under 20x lens). Heat mediated antigen retrieval with Tris-EDTA buffer (pH 9.0).