

For Research Use Only

C1r Polyclonal antibody

Catalog Number: 17346-1-AP

2 Publications



Basic Information

Catalog Number:

17346-1-AP

Size:

150ul, Concentration: 550 ug/ml by Nanodrop and 307 ug/ml by Bradford method using BSA as the standard;

Source:

Rabbit

Isotype:

IgG

Immunogen Catalog Number:

AG11390

GenBank Accession Number:

BC035220

GeneID (NCBI):

715

UNIPROT ID:

P00736

Full Name:

complement component 1, r subcomponent

Calculated MW:

705 aa, 80 kDa

Observed MW:

85 kDa, 30 kDa

Purification Method:

Antigen affinity purification

Recommended Dilutions:

WB 1:5000-1:50000

IHC 1:50-1:500

Applications

Tested Applications:

WB, IHC, ELISA

Cited Applications:

WB, IHC, IP

Species Specificity:

human

Cited Species:

human, mouse

Positive Controls:

WB : human plasma, human blood

IHC : human liver tissue,

Note-IHC: suggested antigen retrieval with TE buffer pH 9.0; (*) Alternatively, antigen retrieval may be performed with citrate buffer pH 6.0

Background Information

The first component of complement is a calcium-dependent complex of the 3 subcomponents C1q, C1r, and C1s. The serine protease subunits C1r and C1s form a Ca(2+)-dependent C1s-C1r-C1r-C1s tetramer. C1r acts by transforming the activation signal into an enzymic activity. C1r is a single-chain glycoprotein that can be cleaved into an A chain and a B chain upon activation. This antibody recognizes the full-length C1r chain and the cleaved B chain.

Notable Publications

Author	Pubmed ID	Journal	Application
Anika Alberts	32286427	Sci Rep	WB
Yuying Ma	39150096	Mol Carcinog	WB,IP,IHC

Storage

Storage:

Store at -20°C. Stable for one year after shipment.

Storage Buffer:

PBS with 0.02% sodium azide and 50% glycerol pH 7.3.

Aliquoting is unnecessary for -20°C storage

*** 20ul sizes contain 0.1% BSA

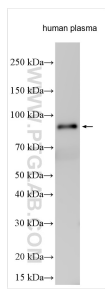
For technical support and original validation data for this product please contact:

T: 1 (888) 4PTGLAB (1-888-478-4522) (toll free in USA), or 1(312) 455-8498 (outside USA)

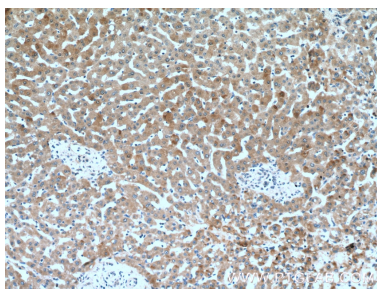
E: proteintech@ptglab.com
W: ptglab.com

This product is exclusively available under Proteintech Group brand and is not available to purchase from any other manufacturer.

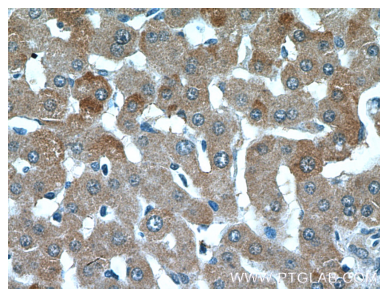
Selected Validation Data



human plasma was subjected to SDS PAGE followed by western blot with 17346-1-AP (C1r antibody) at dilution of 1:20000 incubated at room temperature for 1.5 hours.



Immunohistochemical analysis of paraffin-embedded human liver tissue slide using 17346-1-AP (C1r Antibody) at dilution of 1:200 (under 10x lens).



Immunohistochemical analysis of paraffin-embedded human liver tissue slide using 17346-1-AP (C1r Antibody) at dilution of 1:200 (under 40x lens).