

For Research Use Only

C1r Polyclonal antibody, PBS Only

Catalog Number:17346-1-PBS



Basic Information

Catalog Number:

17346-1-PBS

Size:

100ug , Concentration: 1 mg/ml by Nanodrop;

Source:

Rabbit

Isotype:

IgG

Immunogen Catalog Number:

AG11390

GenBank Accession Number:

BC035220

GeneID (NCBI):

715

UNIPROT ID:

P00736

Full Name:

complement component 1, r subcomponent

Calculated MW:

705 aa, 80 kDa

Observed MW:

85 kDa, 30 kDa

Purification Method:

Antigen affinity purification

Applications

Tested Applications:

WB, IHC, Indirect ELISA

Species Specificity:

human

Background Information

The first component of complement is a calcium-dependent complex of the 3 subcomponents C1q, C1r, and C1s. The serine protease subunits C1r and C1s form a Ca²⁺-dependent C1s-C1r-C1r-C1s tetramer. C1r acts by transforming the activation signal into an enzymic activity. C1r is a single-chain glycoprotein that can be cleaved into an A chain and a B chain upon activation. This antibody recognizes the full-length C1r chain and the cleaved B chain.

Storage

Storage:

Store at -80°C.

Storage Buffer:

PBS Only

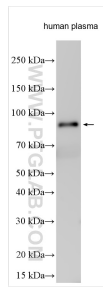
For technical support and original validation data for this product please contact:

T: 1 (888) 4PTGLAB (1-888-478-4522) (toll free in USA), or 1(312) 455-8498 (outside USA)

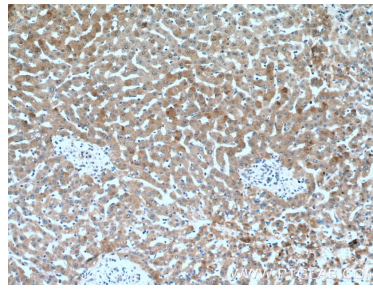
E: proteintech@ptglab.com
W: ptglab.com

This product is exclusively available under Proteintech Group brand and is not available to purchase from any other manufacturer.

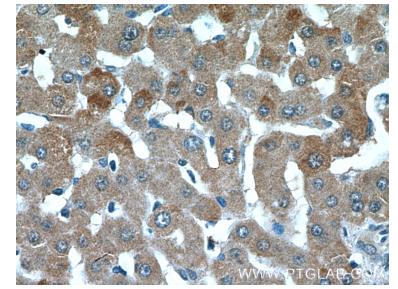
Selected Validation Data



human plasma was subjected to SDS PAGE followed by western blot with 17346-1-AP (C1r antibody) at dilution of 1:20000 incubated at room temperature for 1.5 hours. This data was developed using the same antibody clone with 17346-1-PBS in a different storage buffer formulation.



Immunohistochemical analysis of paraffin-embedded human liver tissue slide using 17346-1-AP (C1r Antibody) at dilution of 1:200 (under 10x lens). This data was developed using the same antibody clone with 17346-1-PBS in a different storage buffer formulation.



Immunohistochemical analysis of paraffin-embedded human liver tissue slide using 17346-1-AP (C1r Antibody) at dilution of 1:200 (under 40x lens). This data was developed using the same antibody clone with 17346-1-PBS in a different storage buffer formulation.