

For Research Use Only

SLC25A18 Polyclonal antibody

Catalog Number: 17348-1-AP

3 Publications



Basic Information

Catalog Number:

17348-1-AP

Size:

150ul, Concentration: 353 ug/ml by Bradford method using BSA as the standard;

Source:

Rabbit

Isotype:

IgG

Immunogen Catalog Number:

AG11420

GenBank Accession Number:

BC031644

GeneID (NCBI):

83733

UNIPROT ID:

Q9H1K4

Full Name:

solute carrier family 25 (mitochondrial carrier), member 18

Calculated MW:

315 aa, 34 kDa

Observed MW:

32-35 kDa

Purification Method:

Antigen affinity purification

Recommended Dilutions:

WB 1:500-1:1000

IP 0.5-4.0 ug for 1.0-3.0 mg of total protein lysate

IHC 1:50-1:500

Applications

Tested Applications:

WB, IP, IHC, ELISA

Cited Applications:

WB, IHC, IF

Species Specificity:

human, mouse

Cited Species:

human, mouse

Positive Controls:

WB: mouse liver tissue, mouse kidney tissue, mouse heart tissue

IP: mouse brain tissue,

IHC: mouse brain tissue,

Note-IHC: suggested antigen retrieval with TE buffer pH 9.0; (*) Alternatively, antigen retrieval may be performed with citrate buffer pH 6.0

Background Information

SLC25A18, also named as GC 2, belongs to the mitochondrial transporter family (SLC25). It is located in inner mitochondrial membrane which involved in the transport of glutamate either with H⁺ or in exchange for OH⁻. SLC25A18 is highly expressed in brain, testis, lung, kidney, liver, spleen and skeletal muscle. 17348-1-AP antibody detects the band around 32-35 kDa in SDS-PAGE. (PMID: 14598172)

Notable Publications

Author	Pubmed ID	Journal	Application
Li Liang	32509397	Am J Cancer Res	IHC
Jinghui Liang	39355508	MedComm (2020)	WB
Jia-Yi Song	38871013	Mitochondrion	WB,IF

Storage

Storage:

Store at -20°C. Stable for one year after shipment.

Storage Buffer:

PBS with 0.02% sodium azide and 50% glycerol pH 7.3.

Aliquoting is unnecessary for -20°C storage

*** 20ul sizes contain 0.1% BSA

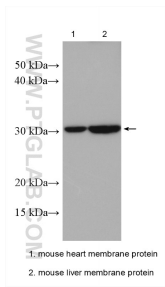
For technical support and original validation data for this product please contact:

T: 1 (888) 4PTGLAB (1-888-478-4522) (toll free in USA), or 1(312) 455-8498 (outside USA)

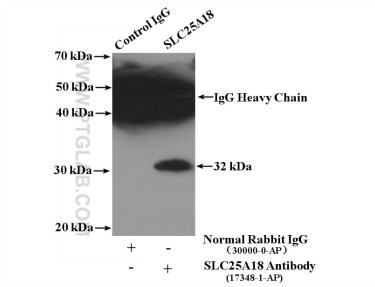
E: proteintech@ptglab.com
W: ptglab.com

This product is exclusively available under Proteintech Group brand and is not available to purchase from any other manufacturer.

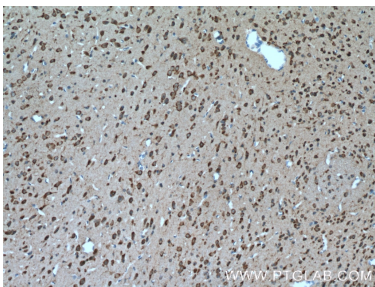
Selected Validation Data



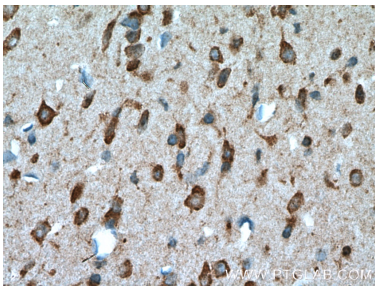
Various lysates were subjected to SDS PAGE followed by western blot with 17348-1-AP (SLC25A18 antibody) at dilution of 1:600 incubated at room temperature for 1.5 hours.



IP result of anti-SLC25A18 (IP:17348-1-AP, 4ug; Detection:17348-1-AP 1:500) with mouse brain tissue lysate 4400ug.



Immunohistochemical analysis of paraffin-embedded mouse brain tissue slide using 17348-1-AP (SLC25A18 Antibody) at dilution of 1:200 (under 10x lens). Heat mediated antigen retrieval with Tris-EDTA buffer (pH 9.0).



Immunohistochemical analysis of paraffin-embedded mouse brain tissue slide using 17348-1-AP (SLC25A18 Antibody) at dilution of 1:200 (under 40x lens). Heat mediated antigen retrieval with Tris-EDTA buffer (pH 9.0).