

For Research Use Only

EFHB Polyclonal antibody, PBS Only

Catalog Number:17352-1-PBS



Basic Information

Catalog Number:

17352-1-PBS

Size:

100ug, Concentration: 1 mg/ml by Nanodrop;

Source:

Rabbit

Isotype:

IgG

Immunogen Catalog Number:

AG11431

GenBank Accession Number:

BC028198

GeneID (NCBI):

151651

UNIPROT ID:

Q8N7U6

Full Name:

EF-hand domain family, member B

Calculated MW:

669aa,76 kDa; 831aa,94 kDa

Purification Method:

Antigen affinity purification

Applications

Tested Applications:

IHC, IF-P, Indirect ELISA

Species Specificity:

human, mouse

Background Information

EFHB (EF-hand domain family member B, also known as CFAP21) interacts with Orai1 in a Ca²⁺-dependent manner. Human EFHB is an 833-amino acid cytosolic protein with two EF-hand domains between amino acids 561-596 and 597-632 (PMID: 34439314).

Storage

Storage:

Store at -80°C.

Storage Buffer:

PBS only, pH7.3

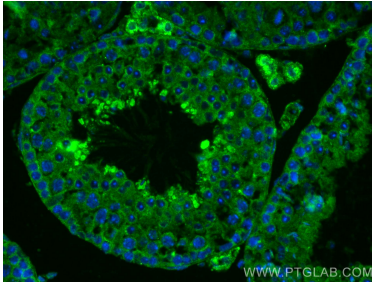
For technical support and original validation data for this product please contact:

T: 1 (888) 4PTGLAB (1-888-478-4522) (toll free in USA), or 1(312) 455-8498 (outside USA)

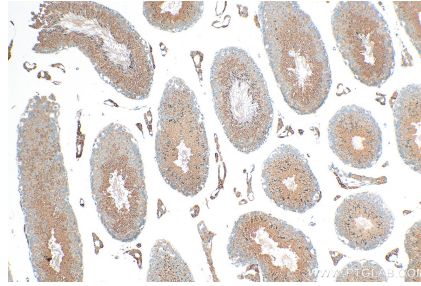
E: proteintech@ptglab.com
W: ptglab.com

This product is exclusively available under Proteintech Group brand and is not available to purchase from any other manufacturer.

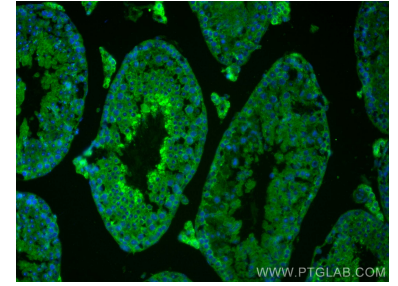
Selected Validation Data



Immunofluorescent analysis of (4% PFA) fixed mouse testis tissue using EFHB antibody (17352-1-AP) at dilution of 1:200 and CoraLite®488-Conjugated AffiniPure Goat Anti-Rabbit IgG(H+L). This data was developed using the same antibody clone with 17352-1-PBS in a different storage buffer formulation.



Immunohistochemical analysis of paraffin-embedded mouse testis tissue slide using 17352-1-AP (EFHB antibody) at dilution of 1:200 (under 10x lens). Heat mediated antigen retrieval with Tris-EDTA buffer (pH 9.0). This data was developed using the same antibody clone with 17352-1-PBS in a different storage buffer formulation.



Immunofluorescent analysis of (4% PFA) fixed mouse testis tissue using EFHB antibody (17352-1-AP) at dilution of 1:200 and CoraLite®488-Conjugated AffiniPure Goat Anti-Rabbit IgG(H+L). This data was developed using the same antibody clone with 17352-1-PBS in a different storage buffer formulation.