

For Research Use Only

CHDH Polyclonal antibody

Catalog Number: 17356-1-AP

Featured Product

6 Publications



Basic Information

Catalog Number:

17356-1-AP

Size:

150ul, Concentration: 450 ug/ml by Nanodrop and 267 ug/ml by Bradford method using BSA as the standard;

Source:

Rabbit

Isotype:

IgG

Immunogen Catalog Number:

AG10614

GenBank Accession Number:

BC034502

GeneID (NCBI):

55349

UNIPROT ID:

Q8NE62

Full Name:

choline dehydrogenase

Calculated MW:

594 aa, 65 kDa

Observed MW:

60 kDa

Purification Method:

Antigen affinity purification

Recommended Dilutions:

WB 1:2000-1:6000

IHC 1:50-1:500

Applications

Tested Applications:

WB, IHC, ELISA

Cited Applications:

WB, IHC, IF

Species Specificity:

human, mouse, rat

Cited Species:

human, mouse

Positive Controls:

WB : rat liver tissue, mouse kidney tissue, mouse liver tissue

IHC : human liver cancer tissue,

Note-IHC: suggested antigen retrieval with TE buffer pH 9.0; (*) Alternatively, antigen retrieval may be performed with citrate buffer pH 6.0

Background Information

CHDH(Choline dehydrogenase, mitochondrial) is also named as CDH, CHD and belongs to the GMC oxidoreductase family. CHDH is a member of the glucose-methanol-choline family of oxidoreductases, with each member containing a consensus FAD-binding domain. Many members of this oxidoreductase family are soluble proteins but mammalian CHDH is associated with the inner mitochondrial membrane (Handbook of vitamins, Robert B, 2007). The full length protein (65 kDa) has a transit peptide of 29 amino acid and the mature CHDH is appropriately located in the inner mitochondrial membrane (PMID:12951056). 17356-1-AP can also recognize the 45 kDa isoform X3 of CHDH.

Notable Publications

Author	Pubmed ID	Journal	Application
Taylor McClatchie	28663368	J Biol Chem	WB
Johnson Amy R AR	22558321	PLoS One	IHC
Xuyong Wei	35430532	Transl Oncol	IHC

Storage

Storage:

Store at -20°C. Stable for one year after shipment.

Storage Buffer:

PBS with 0.02% sodium azide and 50% glycerol pH 7.3.

Aliquoting is unnecessary for -20°C storage

*** 20ul sizes contain 0.1% BSA

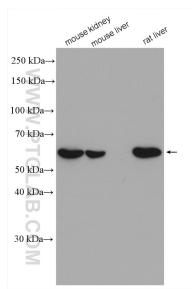
For technical support and original validation data for this product please contact:

T: 1 (888) 4PTGLAB (1-888-478-4522) (toll free in USA), or 1(312) 455-8498 (outside USA)

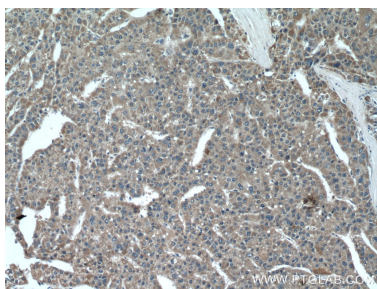
E: proteintech@ptglab.com
W: ptglab.com

This product is exclusively available under Proteintech Group brand and is not available to purchase from any other manufacturer.

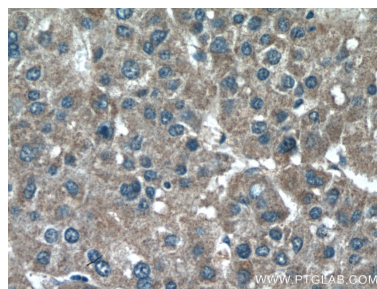
Selected Validation Data



Various lysates were subjected to SDS PAGE followed by western blot with 17356-1-AP (CHDH antibody) at dilution of 1:5000 incubated at room temperature for 1.5 hours.



Immunohistochemical analysis of paraffin-embedded human liver cancer tissue slide using 17356-1-AP (CHDH antibody) at dilution of 1:200 (under 10x lens).



Immunohistochemical analysis of paraffin-embedded human liver cancer tissue slide using 17356-1-AP (CHDH antibody) at dilution of 1:200 (under 40x lens).