

For Research Use Only

SPATA16 Polyclonal antibody

Catalog Number: 17357-1-AP



Basic Information

Catalog Number:

17357-1-AP

Size:

150ul , Concentration: 400 ug/ml by Nanodrop and 187 ug/ml by Bradford method using BSA as the standard;

Source:

Rabbit

Isotype:

IgG

Immunogen Catalog Number:

AG10637

GenBank Accession Number:

BC034496

GeneID (NCBI):

83893

UNIPROT ID:

Q9BXB7

Full Name:

spermatogenesis associated 16

Calculated MW:

569 aa, 65 kDa

Purification Method:

Antigen affinity purification

Recommended Dilutions:

IHC 1:20-1:200

Applications

Tested Applications:

IHC, ELISA

Species Specificity:

human

Note-IHC: suggested antigen retrieval with TE buffer pH 9.0; (*) Alternatively, antigen retrieval may be performed with citrate buffer pH 6.0

Positive Controls:

IHC : human testis tissue,

Background Information

SPATA16, also named as NYD-SP12, belongs to the SPATA16 family. It is involved in the formation of sperm acrosome, which implicated its potential role in spermatogenesis and sperm-egg fusion. SPATA16 localizes to Golgi apparatus and is primarily expressed in testis, with lower levels found in kidney and pancreas.

Storage

Storage:

Store at -20°C. Stable for one year after shipment.

Storage Buffer:

PBS with 0.02% sodium azide and 50% glycerol pH 7.3.

Aliquoting is unnecessary for -20°C storage

*** 20ul sizes contain 0.1% BSA

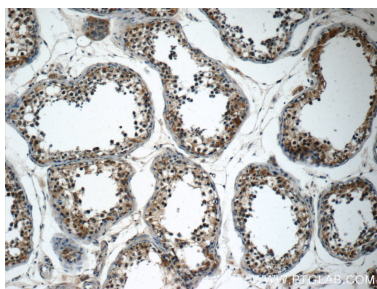
For technical support and original validation data for this product please contact:

T: 1 (888) 4PTGLAB (1-888-478-4522) (toll free in USA), or 1(312) 455-8498 (outside USA)

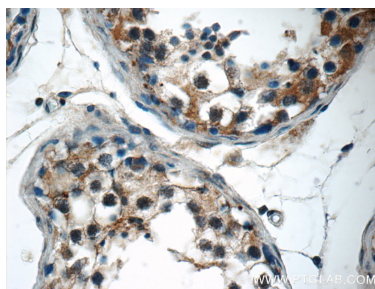
E: proteintech@ptglab.com
W: ptglab.com

This product is exclusively available under Proteintech Group brand and is not available to purchase from any other manufacturer.

Selected Validation Data



Immunohistochemical analysis of paraffin-embedded human testis tissue slide using 17357-1-AP (SPATA16 Antibody) at dilution of 1:50 (under 10x lens).



Immunohistochemical analysis of paraffin-embedded human testis tissue slide using 17357-1-AP (SPATA16 Antibody) at dilution of 1:50 (under 40x lens).