

For Research Use Only

LY6D Polyclonal antibody, PBS Only

Catalog Number: 17361-1-PBS

Featured Product



Basic Information

Catalog Number:

17361-1-PBS

Size:

100ug, Concentration: 1 mg/ml by Nanodrop;

Source:

Rabbit

Isotype:

IgG

Immunogen Catalog Number:

AG10714

GenBank Accession Number:

BC031330

GeneID (NCBI):

8581

UNIPROT ID:

Q14210

Full Name:

lymphocyte antigen 6 complex, locus D

Calculated MW:

128 aa, 13 kDa

Observed MW:

13-14 kDa

Purification Method:

Antigen affinity purification

Applications

Tested Applications:

WB, IHC, Indirect ELISA

Species Specificity:

human, mouse

Background Information

LY6D, also named as E48 and ThB, may act as a specification marker at earliest stage specification of lymphocytes between B- and T-cell development. It marks the earliest stage of B-cell specification.

Storage

Storage:

Store at -80°C.

Storage Buffer:

PBS Only

For technical support and original validation data for this product please contact:

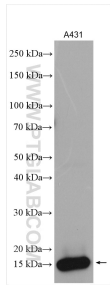
T: 1 (888) 4PTGLAB (1-888-478-4522) (toll free in USA), or 1(312) 455-8498 (outside USA)

E: proteintech@ptglab.com

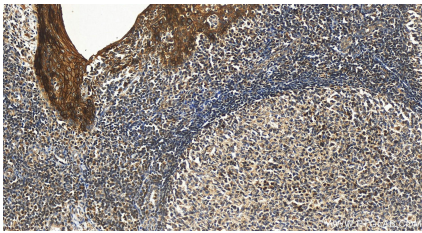
W: ptglab.com

This product is exclusively available under Proteintech Group brand and is not available to purchase from any other manufacturer.

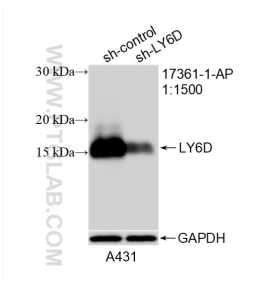
Selected Validation Data



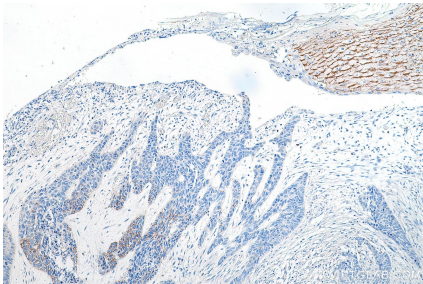
A431 cells were subjected to SDS PAGE followed by western blot with 17361-1-AP (LY6D antibody) at dilution of 1:1500 incubated at room temperature for 1.5 hours. This data was developed using the same antibody clone with 17361-1-PBS in a different storage buffer formulation.



Immunohistochemical analysis of paraffin-embedded human tonsillitis tissue slide using 17361-1-AP (LY6D antibody) at dilution of 1:200 (under 20x lens). Heat mediated antigen retrieval with Tris-EDTA buffer (pH 9.0). This data was developed using the same antibody clone with 17361-1-PBS in a different storage buffer formulation.



WB result of LY6D antibody (17361-1-AP; 1:1500; incubated at room temperature for 1.5 hours) with sh-Control and sh-LY6D transfected A431 cells. This data was developed using the same antibody clone with 17361-1-PBS in a different storage buffer formulation.



Immunohistochemical analysis of paraffin-embedded human skin cancer tissue slide using 17361-1-AP (LY6D antibody) at dilution of 1:200 (under 10x lens). This data was developed using the same antibody clone with 17361-1-PBS in a different storage buffer formulation.