

For Research Use Only

SNRPA1 Polyclonal antibody

Catalog Number: 17368-1-AP

5 Publications



Basic Information

Catalog Number:

17368-1-AP

Size:

150ul, Concentration: 450 ug/ml by Nanodrop and 347 ug/ml by Bradford method using BSA as the standard;

Source:

Rabbit

Isotype:

IgG

Immunogen Catalog Number:

AG10790

GenBank Accession Number:

BC022816

GeneID (NCBI):

6627

UNIPROT ID:

P09661

Full Name:

small nuclear ribonucleoprotein polypeptide A'

Calculated MW:

255 aa, 28 kDa

Observed MW:

28 kDa

Purification Method:

Antigen affinity purification

Recommended Dilutions:

WB 1:1000-1:4000

IP 0.5-4.0 ug for 1.0-3.0 mg of total protein lysate

IHC 1:1000-1:4000

IF/ICC 1:200-1:800

Applications

Tested Applications:

WB, IHC, IF/ICC, IP, ELISA

Cited Applications:

WB, IHC

Species Specificity:

human

Cited Species:

human, mouse

Note-IHC: suggested antigen retrieval with TE buffer pH 9.0; (*) Alternatively, antigen retrieval may be performed with citrate buffer pH 6.0

Positive Controls:

WB: HeLa cells, HepG2 cells, Jurkat cells, MCF-7 cells, Raji cells

IP: HepG2 cells,

IHC: human lung tissue, human brain tissue, human kidney tissue, human liver tissue, human ovary tissue, human placenta tissue, human spleen tissue, human stomach cancer tissue, human testis tissue

IF/ICC: HepG2 cells,

Background Information

Small nuclear ribonucleoprotein polypeptide a-prime(SNRPA1) is part of the U2 snRNP particle, which associated with the branch point of the lariat-shaped intron, in intermediate in the cascade of mRNA precursor splicing event. It may be required for cell division, and helps the A' protein to bind stem loop IV of U2 snRNA. This is a rabbit polyclonal antibody raised against the full length SNRPA1 of human origin.

Notable Publications

Author	Pubmed ID	Journal	Application
Yajie Chen	34266953	Proc Natl Acad Sci U S A	WB
Li Wang	29503206	Cell Chem Biol	WB
Li Wang	33644773	STAR Protoc	WB

Storage

Storage:

Store at -20°C. Stable for one year after shipment.

Storage Buffer:

PBS with 0.02% sodium azide and 50% glycerol pH 7.3.

Aliquoting is unnecessary for -20°C storage

*** 20ul sizes contain 0.1% BSA

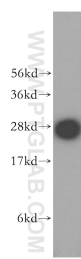
For technical support and original validation data for this product please contact:

T: 1 (888) 4PTGLAB (1-888-478-4522) (toll free in USA), or 1(312) 455-8498 (outside USA)

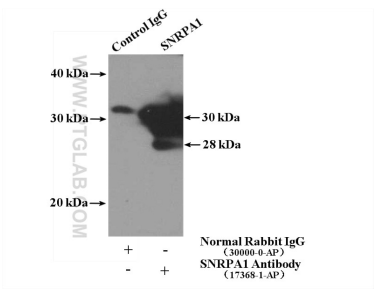
E: proteintech@ptglab.com
W: ptglab.com

This product is exclusively available under Proteintech Group brand and is not available to purchase from any other manufacturer.

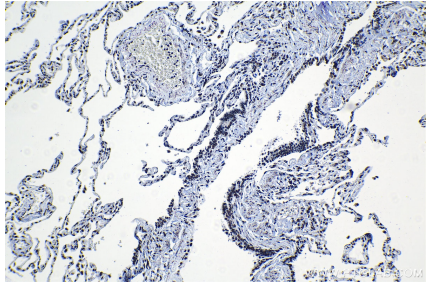
Selected Validation Data



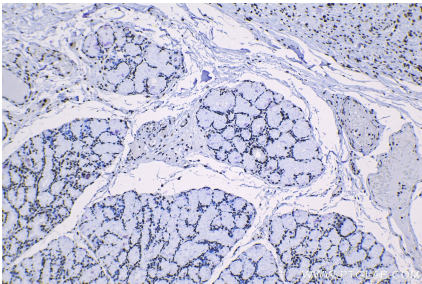
HeLa cells were subjected to SDS PAGE followed by western blot with 17368-1-AP (SNRPA1 antibody) at dilution of 1:500 incubated at room temperature for 1.5 hours.



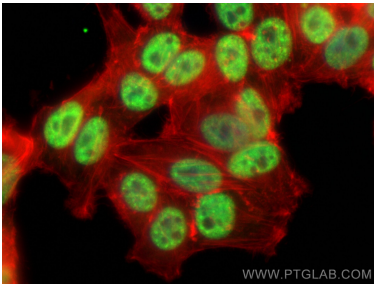
IP result of anti-SNRPA1 (IP:17368-1-AP, 4ug; Detection:17368-1-AP 1:500) with HepG2 cells lysate 1000ug.



Immunohistochemical analysis of paraffin-embedded human lung tissue slide using 17368-1-AP (SNRPA1 antibody) at dilution of 1:2000 (under 10x lens). Heat mediated antigen retrieval with Tris-EDTA buffer (pH 9.0).



Immunohistochemical analysis of paraffin-embedded human stomach cancer tissue slide using 17368-1-AP (SNRPA1 antibody) at dilution of 1:1000 (under 10x lens). Heat mediated antigen retrieval with Tris-EDTA buffer (pH 9.0).



Immunofluorescent analysis of (4% PFA) fixed HepG2 cells using SNRPA1 antibody (17368-1-AP) at dilution of 1:400 and CoraLite®488-Conjugated Goat Anti-Rabbit IgG(H+L) (SA00013-2), CL594-phalloidin (red).