

For Research Use Only

# TEX10 Polyclonal antibody

Catalog Number: 17372-1-AP

Featured Product

11 Publications



## Basic Information

<b>Catalog Number:</b> 17372-1-AP	<b>GenBank Accession Number:</b> BC030652	<b>Purification Method:</b> Antigen affinity purification
<b>Size:</b> 150ul , Concentration: 500 µg/ml by Nanodrop and 280 µg/ml by Bradford method using BSA as the standard;	<b>GeneID (NCBI):</b> 54881	<b>Recommended Dilutions:</b> WB 1:500-1:2000 IHC 1:20-1:200 IF 1:20-1:200
<b>Source:</b> Rabbit	<b>Full Name:</b> testis expressed 10	
<b>Isotype:</b> IgG	<b>Calculated MW:</b> 929 aa, 106 kDa	
<b>Immunogen Catalog Number:</b> AG11014	<b>Observed MW:</b> 95-100 kDa	

## Applications

### Tested Applications:

IF, IHC, WB, ELISA

### Cited Applications:

IF, IHC, IP, WB

### Species Specificity:

human, mouse, rat

### Cited Species:

human

**Note-IHC: suggested antigen retrieval with TE buffer pH 9.0; (\*) Alternatively, antigen retrieval may be performed with citrate buffer pH 6.0**

### Positive Controls:

WB : HeLa cells,

IHC : human brain tissue,

IF : HeLa cells,

## Background Information

TEX10 is a component of some MLL1/MLL complex, at least composed of the core components MLL, ASH2L, HCFC1/HCF1, WDR5 and RBBP5. PELP1-TEX10-WDR18 complex is a regulator of ribosome biogenesis and suggests that its SUMO-controlled distribution coordinates the rate of ribosome formation. And this complex is required for the maturation and nucleolar release of the large ribosomal subunit. (PMID:21326211)

## Notable Publications

Author	Pubmed ID	Journal	Application
Xiaocong Xiang	31638260	Oncol Rep	WB,IHC
Xiaocong Xiang	30045663	Cell Cycle	WB,IHC,IF
Jian Zhou	35219000	Biochem Biophys Res Commun	WB

## Storage

### Storage:

Store at -20°C. Stable for one year after shipment.

### Storage Buffer:

PBS with 0.02% sodium azide and 50% glycerol pH 7.3.

Aliquoting is unnecessary for -20°C storage

\*\*\* 20ul sizes contain 0.1% BSA

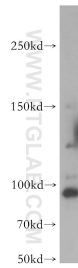
For technical support and original validation data for this product please contact:

T: 1 (888) 4PTGLAB (1-888-478-4522) (toll free in USA), or 1(312) 455-8498 (outside USA)

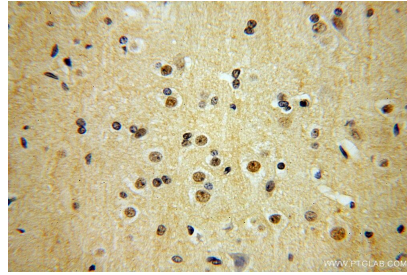
E: proteintech@ptglab.com  
W: ptglab.com

This product is exclusively available under Proteintech Group brand and is not available to purchase from any other manufacturer.

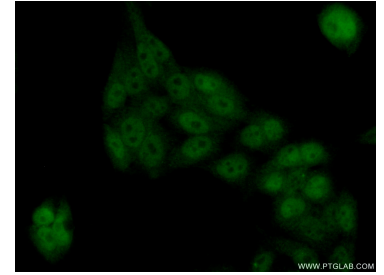
## Selected Validation Data



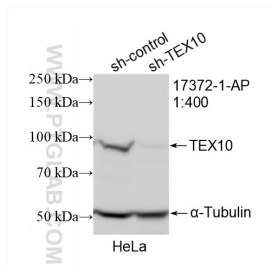
HeLa cells were subjected to SDS PAGE followed by western blot with 17372-1-AP (TEX10 antibody) at dilution of 1:500 incubated at room temperature for 1.5 hours.



Immunohistochemical analysis of paraffin-embedded human brain using 17372-1-AP (TEX10 antibody) at dilution of 1:200 (under 40x lens).



Immunofluorescent analysis of (10% Formaldehyde) fixed HeLa cells using 17372-1-AP (TEX10 antibody) at dilution of 1:50 and Alexa Fluor 488-conjugated AffiniPure Goat Anti-Rabbit IgG(H+L).



WB result of TEX10 antibody (17372-1-AP; 1:400; incubated at room temperature for 1.5 hours) with sh-Control and sh-TEX10 transfected HeLa cells.