

For Research Use Only

TCP11L2 Polyclonal antibody

Catalog Number: 17377-1-AP



Basic Information

Catalog Number: 17377-1-AP	GenBank Accession Number: BC033617	Purification Method: Antigen affinity purification
Size: 150ul , Concentration: 500 µg/ml by Nanodrop;	GeneID (NCBI): 255394	Recommended Dilutions: WB 1:1000-1:8000
Source: Rabbit	Full Name: t-complex 11 (mouse)-like 2	
Isotype: IgG	Calculated MW: 519 aa, 58 kDa	
Immunogen Catalog Number: AG11185	Observed MW: 60-70 kDa	

Applications

Tested Applications: WB, ELISA	Positive Controls: WB : SH-SY5Y cells, U-87 MG cells
Species Specificity: human	

Background Information

TCP11L2 is a protein containing a serine-rich region in its N-terminal region. It is a member of the TCP11 family, which includes SOK1, TCP11L1, and TCP11L2. TCP11L2 has a role in the migration and differentiation of skeletal muscle-derived satellite cells. It has been shown that Tcp112 expression gradually increased during the differentiation of bovine muscle-derived satellite cells. (PMID: 32017087)

Storage

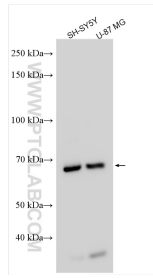
Storage:
Store at -20°C. Stable for one year after shipment.
Storage Buffer:
PBS with 0.02% sodium azide and 50% glycerol pH 7.3.
Aliquoting is unnecessary for -20°C storage

*** 20ul sizes contain 0.1% BSA

For technical support and original validation data for this product please contact:
T: 1 (888) 4PTGLAB (1-888-478-4522) (toll free in USA), or 1(312) 455-8498 (outside USA) E: proteintech@ptglab.com
W: ptglab.com

This product is exclusively available under Proteintech Group brand and is not available to purchase from any other manufacturer.

Selected Validation Data



Various lysates were subjected to SDS PAGE followed by western blot with 17377-1-AP (TCP11L2 antibody) at dilution of 1:4000 incubated at room temperature for 1.5 hours.