

For Research Use Only

SAMD4A Polyclonal antibody

Catalog Number: 17387-1-AP

Featured Product

6 Publications



Basic Information

Catalog Number:

17387-1-AP

Size:

150ul, Concentration: 400 ug/ml by Nanodrop and 233 ug/ml by Bradford method using BSA as the standard;

Source:

Rabbit

Isotype:

IgG

Immunogen Catalog Number:

AG11273

GenBank Accession Number:

BC021726

GeneID (NCBI):

23034

UNIPROT ID:

Q9JPU9

Full Name:

sterile alpha motif domain containing 4A

Calculated MW:

529 aa, 59 kDa

Observed MW:

70 kDa

Purification Method:

Antigen affinity purification

Recommended Dilutions:

WB 1:500-1:1000

IP 0.5-4.0 ug for 1.0-3.0 mg of total protein lysate

IHC 1:20-1:200

Applications

Tested Applications:

WB, IP, IHC, ELISA

Cited Applications:

WB, IHC

Species Specificity:

human, mouse, rat

Cited Species:

human, mouse

Note-IHC: suggested antigen retrieval with TE buffer pH 9.0; (*) Alternatively, antigen retrieval may be performed with citrate buffer pH 6.0

Positive Controls:

WB: mouse skeletal muscle tissue, mouse heart tissue

IP: mouse skeletal muscle tissue,

IHC: human spleen tissue, human kidney tissue, human lung tissue, human ovary tissue, human testis tissue

Notable Publications

Author	Pubmed ID	Journal	Application
Yuze Wang	32341522	Cell Mol Immunol	WB
Chenhua Luo	39805936	Sci Rep	WB
George D Moschonas	39389033	Cell Host Microbe	WB

Storage

Storage:

Store at -20°C. Stable for one year after shipment.

Storage Buffer:

PBS with 0.02% sodium azide and 50% glycerol pH 7.3.

Aliquoting is unnecessary for -20°C storage

*** 20ul sizes contain 0.1% BSA

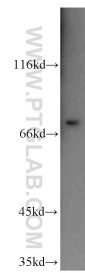
For technical support and original validation data for this product please contact:

T: 1 (888) 4PTGLAB (1-888-478-4522) (toll free in USA), or 1(312) 455-8498 (outside USA)

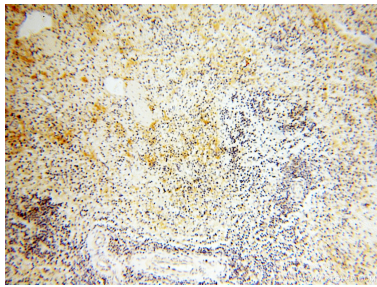
E: proteintech@ptglab.com
W: ptglab.com

This product is exclusively available under Proteintech Group brand and is not available to purchase from any other manufacturer.

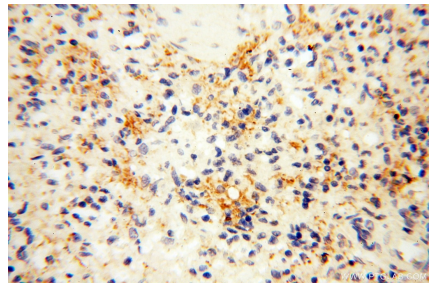
Selected Validation Data



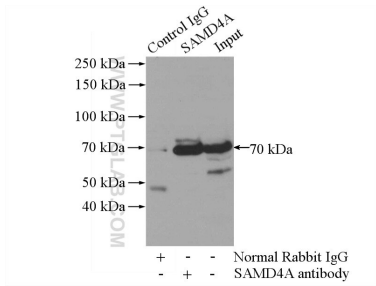
mouse skeletal muscle tissue were subjected to SDS PAGE followed by western blot with 17387-1-AP (SAMD4A antibody) at dilution of 1:500 incubated at room temperature for 1.5 hours.



Immunohistochemical analysis of paraffin-embedded human spleen using 17387-1-AP (SAMD4A antibody) at dilution of 1:100 (under 10x lens).



Immunohistochemical analysis of paraffin-embedded human spleen using 17387-1-AP (SAMD4A antibody) at dilution of 1:100 (under 40x lens).



IP result of anti-SAMD4A (IP:17387-1-AP, 4ug; Detection:17387-1-AP 1:500) with mouse skeletal muscle tissue lysate 2200ug.