

For Research Use Only

CPNE7 Polyclonal antibody

Catalog Number: 17396-1-AP **1 Publications**



Basic Information

Catalog Number: 17396-1-AP	GenBank Accession Number: BC035334	Purification Method: Antigen affinity purification
Size: 150ul , Concentration: 400 µg/ml by Nanodrop and 280 µg/ml by Bradford method using BSA as the standard;	GeneID (NCBI): 27132	Recommended Dilutions: WB 1:1000-1:8000
Source: Rabbit	Full Name: copine VII	
Isotype: IgG	Calculated MW: 558 aa, 62 kDa	
Immunogen Catalog Number: AG11313	Observed MW: 65-70 kDa	

Applications

Tested Applications: WB, ELISA	Positive Controls: WB : COLO 320 cells, mouse brain tissue, rat brain tissue
Cited Applications: WB	
Species Specificity: human, mouse, rat	
Cited Species: human	

Background Information

Copines are a family of evolutionarily conserved calcium-dependent phospholipid-binding proteins (PMID: 9430674). They contain two Ca(2+)- and phospholipid-binding domains known as C2 domains. Copines are potentially involved in regulating membrane trafficking and in protein-protein interactions.

Notable Publications

Author	Pubmed ID	Journal	Application
Tianwei Chen	36453019	Mol Oncol	WB

Storage

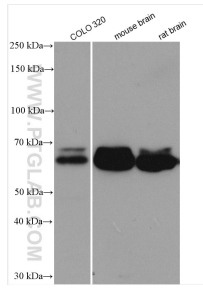
Storage:
Store at -20°C. Stable for one year after shipment.
Storage Buffer:
PBS with 0.02% sodium azide and 50% glycerol pH 7.3.
Aliquoting is unnecessary for -20°C storage

***** 20ul sizes contain 0.1% BSA**

For technical support and original validation data for this product please contact:
T: 1 (888) 4PTGLAB (1-888-478-4522) (toll free in USA), or 1(312) 455-8498 (outside USA) E: proteintech@ptglab.com W: ptglab.com

This product is exclusively available under Proteintech Group brand and is not available to purchase from any other manufacturer.

Selected Validation Data



Various lysates were subjected to SDS PAGE followed by western blot with 17396-1-AP (CPNE7 antibody) at dilution of 1:4000 incubated at room temperature for 1.5 hours.