

For Research Use Only

# ZG16 Polyclonal antibody

Catalog Number: 17397-1-AP **1 Publications**



## Basic Information

<b>Catalog Number:</b> 17397-1-AP	<b>GenBank Accession Number:</b> BC029149	<b>Purification Method:</b> Antigen affinity purification
<b>Size:</b> 150ul , Concentration: 400 µg/ml by Nanodrop and 300 µg/ml by Bradford method using BSA as the standard;	<b>GeneID (NCBI):</b> 653808	<b>Recommended Dilutions:</b> WB 1:300-1:600 IHC 1:50-1:500 IF 1:50-1:500
<b>Source:</b> Rabbit	<b>Full Name:</b> zymogen granule protein 16 homolog (rat)	
<b>Isotype:</b> IgG	<b>Calculated MW:</b> 167 aa, 18 kDa	
<b>Immunogen Catalog Number:</b> AG11332	<b>Observed MW:</b> 16 kDa	

## Applications

### Tested Applications:

IF, IHC, WB, ELISA

### Cited Applications:

WB

### Species Specificity:

human, mouse

### Cited Species:

human

**Note-IHC: suggested antigen retrieval with TE buffer pH 9.0; (\*) Alternatively, antigen retrieval may be performed with citrate buffer pH 6.0**

### Positive Controls:

**WB:** human colon tissue, mouse colon tissue

**IHC:** mouse pancreas tissue, human pancreas tissue, mouse colon tissue, mouse small intestine tissue

**IF:** mouse small intestine tissue,

## Background Information

## Notable Publications

Author	Pubmed ID	Journal	Application
Tae-Yoon Park	37438521	Nature	WB

## Storage

### Storage:

Store at -20°C. Stable for one year after shipment.

### Storage Buffer:

PBS with 0.02% sodium azide and 50% glycerol pH 7.3.

Aliquoting is unnecessary for -20°C storage

\*\*\* 20ul sizes contain 0.1% BSA

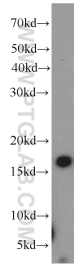
For technical support and original validation data for this product please contact:

T: 1 (888) 4PTGLAB (1-888-478-4522) (toll free in USA), or 1(312) 455-8498 (outside USA)

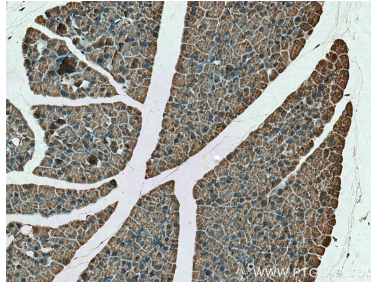
E: [proteintech@ptglab.com](mailto:proteintech@ptglab.com)  
W: [ptglab.com](http://ptglab.com)

**This product is exclusively available under Proteintech Group brand and is not available to purchase from any other manufacturer.**

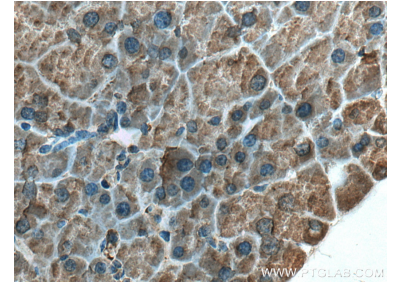
## Selected Validation Data



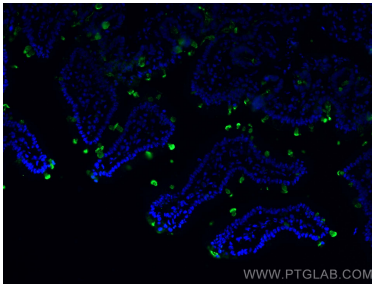
human colon tissue were subjected to SDS PAGE followed by western blot with 17397-1-AP (ZG16 antibody) at dilution of 1:500 incubated at room temperature for 1.5 hours.



Immunohistochemical analysis of paraffin-embedded mouse pancreas tissue slide using 17397-1-AP (ZG16 antibody) at dilution of 1:200 (under 10x lens). Heat mediated antigen retrieval with Tris-EDTA buffer (pH 9.0).



Immunohistochemical analysis of paraffin-embedded mouse pancreas tissue slide using 17397-1-AP (ZG16 antibody) at dilution of 1:200 (under 40x lens). Heat mediated antigen retrieval with Tris-EDTA buffer (pH 9.0).



Immunofluorescent analysis of (4% PFA) fixed mouse small intestine tissue using ZG16 antibody (17397-1-AP) at dilution of 1:200 and CoraLite®488-Conjugated AffiniPure Goat Anti-Rabbit IgG(H+L).