

For Research Use Only

# CXCL12/SDF-1 Polyclonal antibody

Catalog Number: 17402-1-AP

Featured Product

42 Publications



## Basic Information

<b>Catalog Number:</b> 17402-1-AP	<b>GenBank Accession Number:</b> BC039893	<b>Purification Method:</b> Antigen affinity purification
<b>Size:</b> 150ul , Concentration: 200 µg/ml by Nanodrop;	<b>GeneID (NCBI):</b> 6387	<b>Recommended Dilutions:</b> IHC 1:50-1:500
<b>Source:</b> Rabbit	<b>Full Name:</b> chemokine (C-X-C motif) ligand 12 (stromal cell-derived factor 1)	
<b>Isotype:</b> IgG	<b>Calculated MW:</b> 89 aa, 10 kDa	
<b>Immunogen Catalog Number:</b> AG11379		

## Applications

<b>Tested Applications:</b> FC, IHC, ELISA	<b>Positive Controls:</b> IHC : human liver cancer tissue,
<b>Cited Applications:</b> IF, IHC, WB	
<b>Species Specificity:</b> human, mouse	
<b>Cited Species:</b> human, rat, mouse	
<b>Note-IHC: suggested antigen retrieval with TE buffer pH 9.0; (*) Alternatively, antigen retrieval may be performed with citrate buffer pH 6.0</b>	

## Background Information

In adulthood, CXCL12 plays an important role in angiogenesis by recruiting endothelial progenitor cells (EPCs) from the bone marrow through a CXCR4 dependent mechanism (PMID: 17878755). It is this function of CXCL12 that makes it a very important factor in carcinogenesis and the neovascularisation linked to tumour progression (PMID: 16943240). CXCL12 also has a role in tumor metastasis where cancer cells that express the receptor CXCR4 are attracted to metastasis target tissues that release the ligand, CXCL12 (PMID: 11242036). In breast cancer, however, increased expression of CXCL12 determines a reduced risk of distant metastasis (PMID: 19646861; 17724466). This antibody can detect all the isoforms of CXCL12/SDF1.

## Notable Publications

Author	Pubmed ID	Journal	Application
Bernardo Tavora	32999457	Nature	IF
Jianping Wang	28943249	Neuroscience	IF
Taotao Sun	36113503	Andrology	WB,IF

## Storage

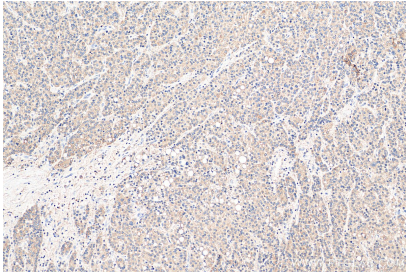
**Storage:**  
Store at -20°C. Stable for one year after shipment.  
**Storage Buffer:**  
PBS with 0.02% sodium azide and 50% glycerol pH 7.3.  
Aliquoting is unnecessary for -20°C storage

\*\*\* 20ul sizes contain 0.1% BSA

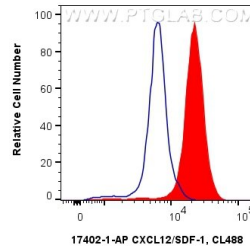
For technical support and original validation data for this product please contact:  
T: 1 (888) 4PTGLAB (1-888-478-4522) (toll free in USA), or 1(312) 455-8498 (outside USA)  
E: [proteintech@ptglab.com](mailto:proteintech@ptglab.com)  
W: [ptglab.com](http://ptglab.com)

This product is exclusively available under Proteintech Group brand and is not available to purchase from any other manufacturer.

## Selected Validation Data



Immunohistochemical analysis of paraffin-embedded human liver cancer tissue slide using 17402-1-AP (CXCL12/SDF-1 antibody) at dilution of 1:200 (under 10x lens). Heat mediated antigen retrieval with Tris-EDTA buffer (pH 9.0).



1X10<sup>6</sup> Jurkat cells were intracellularly stained with 0.4 ug Anti-Human CXCL12/SDF-1 (17402-1-AP) and CoraLite® 488-Conjugated AffiniPure Goat Anti-Rabbit IgG(H+L) at dilution 1:1000 (red), or 0.4 ug Rabbit IgG control Rabbit PolyAb (30000-O-AP, Clone: ) (blue). Cells were fixed with 4% PFA and permeabilized with Flow Cytometry Perm Buffer (PF00011-C).