

For Research Use Only

SYCE1 Polyclonal antibody

Catalog Number: 17406-1-AP

Featured Product

2 Publications



Basic Information

Catalog Number:

17406-1-AP

Size:

150ul, Concentration: 800 ug/ml by Nanodrop and 293 ug/ml by Bradford method using BSA as the standard;

Source:

Rabbit

Isotype:

IgG

Immunogen Catalog Number:

AG11426

GenBank Accession Number:

BC034821

GeneID (NCBI):

93426

UNIPROT ID:

Q8N0S2

Full Name:

synaptonemal complex central element protein 1

Calculated MW:

315 aa, 36 kDa

Observed MW:

44 kDa

Purification Method:

Antigen affinity purification

Recommended Dilutions:

WB 1:500-1:2000

IHC 1:20-1:200

Applications

Tested Applications:

WB, IHC, ELISA

Cited Applications:

WB, IF, IHC

Species Specificity:

human, mouse, rat

Cited Species:

human, mouse

Positive Controls:

WB : mouse testis tissue, rat testis tissue

IHC : human testis tissue, human ovary tissue

Note-IHC: suggested antigen retrieval with TE buffer pH 9.0; (*) Alternatively, antigen retrieval may be performed with citrate buffer pH 6.0

Notable Publications

Author	Pubmed ID	Journal	Application
Fernando Sánchez-Sáez	32917591	Sci Adv	IF
Ke Feng	35023261	J Cell Mol Med	WB,IHC

Storage

Storage:

Store at -20°C. Stable for one year after shipment.

Storage Buffer:

PBS with 0.02% sodium azide and 50% glycerol pH 7.3.

Aliquoting is unnecessary for -20°C storage

*** 20ul sizes contain 0.1% BSA

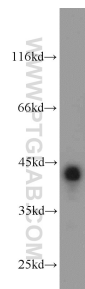
For technical support and original validation data for this product please contact:

T: 1 (888) 4PTGLAB (1-888-478-4522) (toll free in USA), or 1(312) 455-8498 (outside USA)

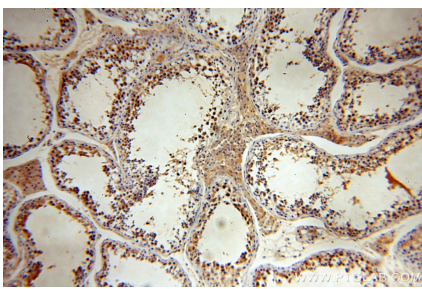
E: proteintech@ptglab.com
W: ptglab.com

This product is exclusively available under Proteintech Group brand and is not available to purchase from any other manufacturer.

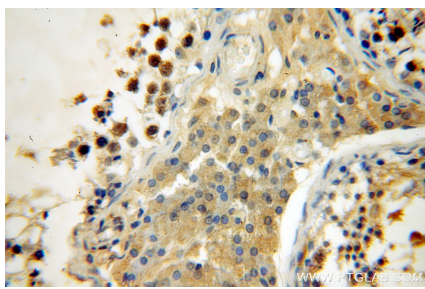
Selected Validation Data



mouse testis tissue were subjected to SDS PAGE followed by western blot with 17406-1-AP (SYCE1 antibody) at dilution of 1:1000 incubated at room temperature for 1.5 hours.



Immunohistochemical analysis of paraffin-embedded human testis using 17406-1-AP (SYCE1 antibody) at dilution of 1:100 (under 10x lens).



Immunohistochemical analysis of paraffin-embedded human testis using 17406-1-AP (SYCE1 antibody) at dilution of 1:100 (under 40x lens).