

For Research Use Only

PLCL2 Polyclonal antibody

Catalog Number: 17421-1-AP **2 Publications**



Basic Information

Catalog Number: 17421-1-AP	GenBank Accession Number: BC036392	Purification Method: Antigen affinity purification
Size: 150ul , Concentration: 500 ug/ml by Nanodrop and 267 ug/ml by Bradford method using BSA as the standard;	GeneID (NCBI): 23228	Recommended Dilutions: WB 1:1000-1:3000 IF-P 1:50-1:500
Source: Rabbit	UNIPROT ID: Q9UPRO	
Isotype: IgG	Full Name: phospholipase C-like 2	
Immunogen Catalog Number: AG11443	Calculated MW: 126 kDa	
	Observed MW: 126 kDa	

Applications

Tested Applications: WB, IF-P, ELISA	Positive Controls: WB : mouse brain tissue, rat brain tissue IF-P : mouse brain tissue,
Cited Applications: WB	
Species Specificity: human, mouse, rat	
Cited Species: mouse	

Background Information

PLCL2, a novel phospholipase C-like protein, is expressed in lymphocytes and platelets. The expression of PLCL2 is associated with the proliferation of mature B cells in the immune system. PLCL2 is a new susceptibility loci for myocardial infarction. It has been shown that PLCL2 plays a key role in the pathogenesis of atherosclerosis and systemic sclerosis. There are three isoforms of PLCL2 protein and 17421-1-AP antibody detects the 126 kDa band in SDS-PAGE. (PMID: 24916648, 25880423)

Notable Publications

Author	Pubmed ID	Journal	Application
Vanitha Bala	25404917	Front Physiol	WB
Mary C Peavey	33707208	Proc Natl Acad Sci U S A	WB

Storage

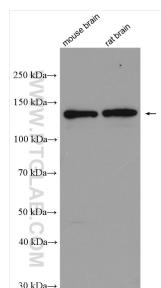
Storage:
Store at -20°C. Stable for one year after shipment.
Storage Buffer:
PBS with 0.02% sodium azide and 50% glycerol pH 7.3.
Aliquoting is unnecessary for -20°C storage

*** 20ul sizes contain 0.1% BSA

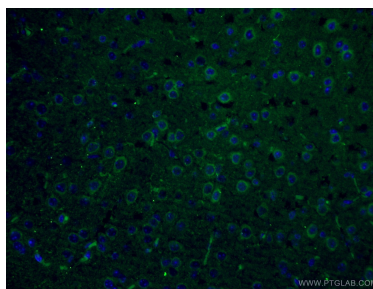
For technical support and original validation data for this product please contact:
T: 1 (888) 4PTGLAB (1-888-478-4522) (toll free in USA), or 1(312) 455-8498 (outside USA)
E: proteintech@ptglab.com
W: ptglab.com

This product is exclusively available under Proteintech Group brand and is not available to purchase from any other manufacturer.

Selected Validation Data



Various lysates were subjected to SDS PAGE followed by western blot with 17421-1-AP (PLCL2 antibody) at dilution of 1:2000 incubated at room temperature for 1.5 hours.



Immunofluorescent analysis of (4% PFA) fixed mouse brain tissue using 17421-1-AP (PLCL2 antibody) at dilution of 1:50 and CoraLite488-Conjugated Goat Anti-Rabbit IgG(H+L).