

For Research Use Only

KIF26B Polyclonal antibody

Catalog Number: 17422-1-AP

Featured Product

12 Publications



Basic Information

Catalog Number: 17422-1-AP	GenBank Accession Number: BC042481	Purification Method: Antigen affinity purification
Size: 150ul, Concentration: 650 µg/ml by Nanodrop and 360 µg/ml by Bradford method using BSA as the standard;	GeneID (NCBI): 55083	Recommended Dilutions: WB 1:200-1:1000 IHC 1:20-1:200
Source: Rabbit	Full Name: kinesin family member 26B	
Isotype: IgG	Calculated MW: 2108aa, 224 kDa; 162aa, 17 kDa	
Immunogen Catalog Number: AG11446	Observed MW: 224-230 kDa, 17-22 kDa	

Applications

Tested Applications: IHC, WB, ELISA	Positive Controls: WB: MDCK cells, HEK-293 cells, MCF-7 cells
Cited Applications: IF, IHC, WB	IHC: human kidney tissue, human breast cancer tissue
Species Specificity: human, Canine	
Cited Species: human, rat, mouse	

Note-IHC: suggested antigen retrieval with TE buffer pH 9.0; (*) Alternatively, antigen retrieval may be performed with citrate buffer pH 6.0

Background Information

KIF26B is a member of kinesin-11 family and plays important role in embryogenesis. It is a downstream target of Sall1 and is essential for kidney development. KIF26B is also involved in tumorigenesis.

Notable Publications

Author	Pubmed ID	Journal	Application
Yan Teng	30248545	Biomed Pharmacother	IHC, WB
SuXia Wang	34817735	Med Oncol	WB, IHC
Mingming Yan	34787331	J Bone Miner Res	WB, IF

Storage

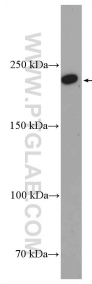
Storage:
Store at -20°C. Stable for one year after shipment.
Storage Buffer:
PBS with 0.02% sodium azide and 50% glycerol pH 7.3.
Aliquoting is unnecessary for -20°C storage

*** 20ul sizes contain 0.1% BSA

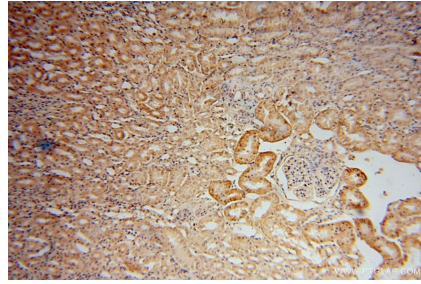
For technical support and original validation data for this product please contact:
T: 1 (888) 4PTGLAB (1-888-478-4522) (toll free in USA), or 1(312) 455-8498 (outside USA)
E: proteintech@ptglab.com
W: ptglab.com

This product is exclusively available under Proteintech Group brand and is not available to purchase from any other manufacturer.

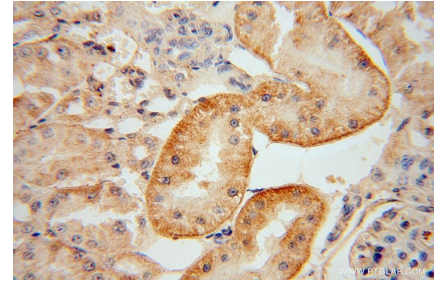
Selected Validation Data



MDCK cells were subjected to SDS PAGE followed by western blot with 17422-1-AP (KIF26B antibody) at dilution of 1:300 incubated at room temperature for 1.5 hours.



Immunohistochemical analysis of paraffin-embedded human kidney using 17422-1-AP (KIF26B antibody) at dilution of 1:50 (under 10x lens).



Immunohistochemical analysis of paraffin-embedded human kidney using 17422-1-AP (KIF26B antibody) at dilution of 1:50 (under 40x lens).