

For Research Use Only

PCDH21 Polyclonal antibody

Catalog Number: 17424-1-AP



Basic Information

Catalog Number: 17424-1-AP	GenBank Accession Number: BC038799	Purification Method: Antigen affinity purification
Size: 150ul , Concentration: 600 ug/ml by Nanodrop;	GeneID (NCBI): 92211	Recommended Dilutions: WB 1:500-1:1000
Source: Rabbit	UNIPROT ID: Q96JP9	
Isotype: IgG	Full Name: protocadherin 21	
Immunogen Catalog Number: AG11451	Calculated MW: 745 aa, 82 kDa	
	Observed MW: 110-120 kDa	

Applications

Tested Applications: WB, ELISA	Positive Controls: WB : mouse retina tissue, rat retina tissue
Species Specificity: human, mouse, rat	

Background Information

Protocadherins, which constitute the largest subgroup within the cadherin superfamily, are predominantly expressed in the nervous system and are probably involved in the regulation of neuronal recognition and connectivity (PMID: 17936607; 12231349; 17133224). PCDH21 (protocadherin 21), also known as CDHR1, is a photoreceptor-specific cadherin protein containing six ECs and an intracellular domain. The mutations of PCDH21 cause recessive retinal degeneration and autosomal recessive cone-rod dystrophy in humans (PMID: 16288196; PMID: 20805371). The full length of the PCDH21 protein is 120 kDa, the N-terminal soluble fragment is 95 kDa, and the C-terminal fragment is 25 kDa (PMID: 35066146; PMID: 18654668; PMID: 33964272).

Storage

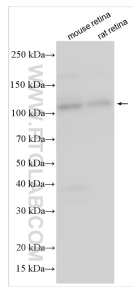
Storage:
Store at -20°C. Stable for one year after shipment.
Storage Buffer:
PBS with 0.02% sodium azide and 50% glycerol pH 7.3.
Aliquoting is unnecessary for -20°C storage

*** 20ul sizes contain 0.1% BSA

For technical support and original validation data for this product please contact:
T: 1 (888) 4PTGLAB (1-888-478-4522) (toll free in USA), or 1(312) 455-8498 (outside USA)
E: proteintech@ptglab.com
W: ptglab.com

This product is exclusively available under Proteintech Group brand and is not available to purchase from any other manufacturer.

Selected Validation Data



Various lysates were subjected to SDS PAGE followed by western blot with 17424-1-AP (PCDH21 antibody) at dilution of 1:600 incubated at room temperature for 1.5 hours.