

For Research Use Only

# PCDH21 Polyclonal antibody, PBS Only

Catalog Number: 17424-1-PBS



## Basic Information

**Catalog Number:**

17424-1-PBS

**Size:**

100ug, Concentration: 1 mg/ml by Nanodrop;

**Source:**

Rabbit

**Isotype:**

IgG

**Immunogen Catalog Number:**

AG11451

**GenBank Accession Number:**

BC038799

**GeneID (NCBI):**

92211

**UNIPROT ID:**

Q96JP9

**Full Name:**

protocadherin 21

**Calculated MW:**

745 aa, 82 kDa

**Observed MW:**

110-120 kDa

**Purification Method:**

Antigen affinity purification

## Applications

**Tested Applications:**

WB, Indirect ELISA

**Species Specificity:**

human, mouse, rat

## Background Information

Protocadherins, which constitute the largest subgroup within the cadherin superfamily, are predominantly expressed in the nervous system and are probably involved in the regulation of neuronal recognition and connectivity (PMID: 17936607; 12231349; 17133224). Protocadherin-21 (PCDH21) is highly expressed in the retinal photoreceptor cells and assembles the outer segment disc. PCDH21 is a candidate for human inherited retinal diseases, such as retinitis pigmentosa (RP) and Leber congenital amaurosis (LCA) (PMID: 16288196; PMID: 20087419).

## Storage

**Storage:**

Store at -80°C.

**Storage Buffer:**

PBS Only

For technical support and original validation data for this product please contact:

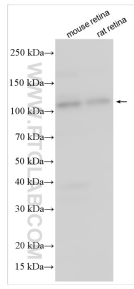
T: 1 (888) 4PTGLAB (1-888-478-4522) (toll free in USA), or 1(312) 455-8498 (outside USA)

E: [proteintech@ptglab.com](mailto:proteintech@ptglab.com)

W: [ptglab.com](http://ptglab.com)

**This product is exclusively available under Proteintech Group brand and is not available to purchase from any other manufacturer.**

## Selected Validation Data



Various lysates were subjected to SDS PAGE followed by western blot with 17424-1-AP (PCDH21 antibody) at dilution of 1:600 incubated at room temperature for 1.5 hours. This data was developed using the same antibody clone with 17424-1-PBS in a different storage buffer formulation.