

For Research Use Only

MAGT1 Polyclonal antibody

Catalog Number: 17430-1-AP

Featured Product

16 Publications



Basic Information

Catalog Number: 17430-1-AP	GenBank Accession Number: BC060842	Purification Method: Antigen affinity purification
Size: 150ul , Concentration: 260 µg/ml by Nanodrop;	GeneID (NCBI): 84061	Recommended Dilutions: WB 1:500-1:2000 IHC 1:20-1:200 IF 1:10-1:100
Source: Rabbit	Full Name: magnesium transporter 1	
Isotype: IgG	Calculated MW: 335 aa, 38 kDa	
Immunogen Catalog Number: AG11496	Observed MW: 45-47 kDa	

Applications

Tested Applications: IF, IHC, WB, ELISA	Positive Controls:
Cited Applications: IF, WB	WB : mouse cerebellum tissue, mouse heart tissue, mouse colon tissue, COLO 320 cells, HEK-293 cells
Species Specificity: human, mouse, rat	IHC : human liver tissue, human colon cancer tissue, human skeletal muscle tissue, mouse brain tissue
Cited Species: human, rat	IF : HepG2 cells,
Note-IHC: suggested antigen retrieval with <i>TE buffer pH 9.0; (*) Alternatively, antigen retrieval may be performed with citrate buffer pH 6.0</i>	

Background Information

MAGT1 is a mammalian Mg²⁺-selective transporter being required for cellular magnesium uptake and vertebrate embryonic development. It possesses five putative transmembrane (TM) regions with a cleavage site, a N-glycosylation site, and a number of phosphorylation sites. Recently mutations in MAGT1 has been found to be associated with a novel X-linked human immunodeficiency. The MAGT1 protein was undetectable in the patients' cells by western blot or immunofluorescent cell surface staining. MAGT1 had been detected as 38 kDa (PMID: 18705540) or 45-47 kDa (PMID: 27383987) by western blot.

Notable Publications

Author	Pubmed ID	Journal	Application
Shenglin Zhu	31511384	J Virol	WB
Julie Brault	33051095	Cytotherapy	WB
Lin Lu	30849960	BMC Cancer	WB

Storage

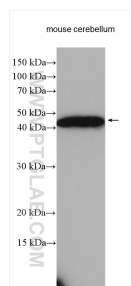
Storage:
Store at -20°C. Stable for one year after shipment.
Storage Buffer:
PBS with 0.02% sodium azide and 50% glycerol pH 7.3.
Aliquoting is unnecessary for -20°C storage

*** 20ul sizes contain 0.1% BSA

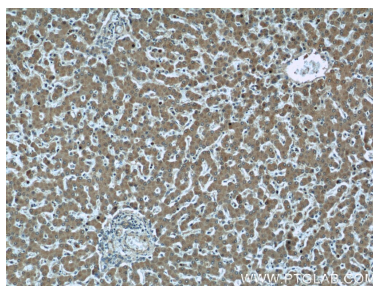
For technical support and original validation data for this product please contact:
T: 1 (888) 4PTGLAB (1-888-478-4522) (toll free in USA), or 1(312) 455-8498 (outside USA)
E: proteintech@ptglab.com
W: ptglab.com

This product is exclusively available under Proteintech Group brand and is not available to purchase from any other manufacturer.

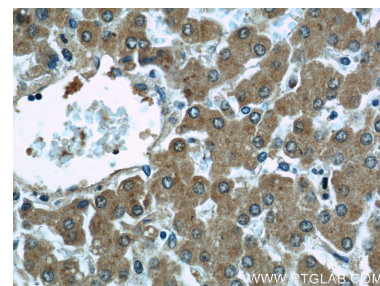
Selected Validation Data



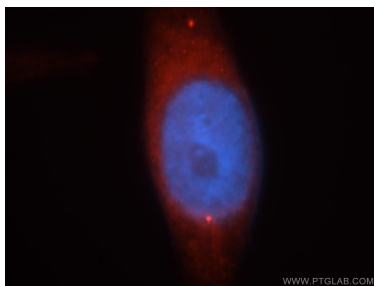
Mouse cerebellum lysates were subjected to SDS PAGE followed by western blot with 17430-1-AP (MAGT1 antibody) at dilution of 1:1000 incubated at room temperature for 1.5 hours.



Immunohistochemical analysis of paraffin-embedded human liver using 17430-1-AP (MAGT1 antibody) at dilution of 1:50 (under 10x lens).



Immunohistochemical analysis of paraffin-embedded human liver using 17430-1-AP (MAGT1 antibody) at dilution of 1:50 (under 40x lens).



Immunofluorescent analysis of HepG2 cells, using 17430-1-AP and Rhodamine-labeled goat anti-rabbit IgG (red). Blue pseudocolor = DAPI (fluorescent DNA dye).