

For Research Use Only

MAGT1 Polyclonal antibody, PBS Only

Catalog Number: 17430-1-PBS

Featured Product



Basic Information

Catalog Number:

17430-1-PBS

Size:

100ug, Concentration: 1 mg/ml by Nanodrop;

Source:

Rabbit

Isotype:

IgG

Immunogen Catalog Number:

AG11496

GenBank Accession Number:

BC060842

GeneID (NCBI):

84061

UNIPROT ID:

Q9H0U3

Full Name:

magnesium transporter 1

Calculated MW:

335 aa, 38 kDa

Observed MW:

45-47 kDa

Purification Method:

Antigen affinity purification

Applications

Tested Applications:

WB, IHC, IF/ICC, IF-P, Indirect ELISA

Species Specificity:

human, mouse, rat

Background Information

MAGT1 is a mammalian Mg²⁺-selective transporter being required for cellular magnesium uptake and vertebrate embryonic development. It possesses five putative transmembrane (TM) regions with a cleavage site, a N-glycosylation site, and a number of phosphorylation sites. Recently mutations in MAGT1 has been found to be associated with a novel X-linked human immunodeficiency. The MAGT1 protein was undetectable in the patients' cells by western blot or immunofluorescent cell surface staining. MAGT1 had been detected as 38 kDa (PMID: 18705540) or 45-47 kDa (PMID: 27383987) by western blot.

Storage

Storage:

Store at -80°C.

Storage Buffer:

PBS only, pH7.3

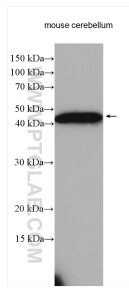
For technical support and original validation data for this product please contact:

T: 1 (888) 4PTGLAB (1-888-478-4522) (toll free in USA), or 1(312) 455-8498 (outside USA)

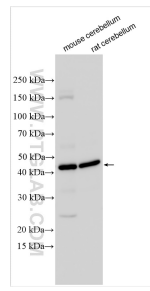
E: proteintech@ptglab.com
W: ptglab.com

This product is exclusively available under Proteintech Group brand and is not available to purchase from any other manufacturer.

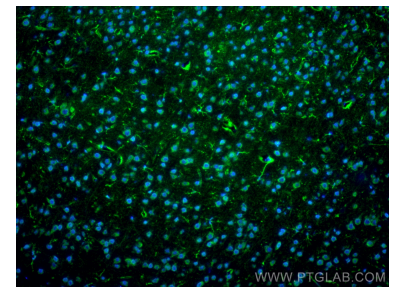
Selected Validation Data



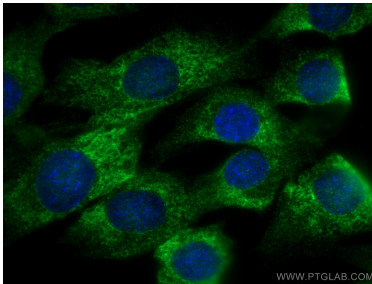
Mouse cerebellum lysates were subjected to SDS PAGE followed by western blot with 17430-1-AP (MAGT1 antibody) at dilution of 1:1000 incubated at room temperature for 1.5 hours. This data was developed using the same antibody clone with 17430-1-PBS in a different storage buffer formulation.



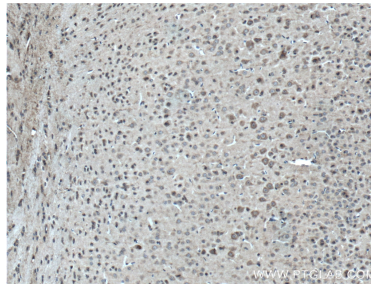
Various lysates were subjected to SDS PAGE followed by western blot with 17430-1-AP (MAGT1 antibody) at dilution of 1:500 incubated at room temperature for 1.5 hours. This data was developed using the same antibody clone with 17430-1-PBS in a different storage buffer formulation.



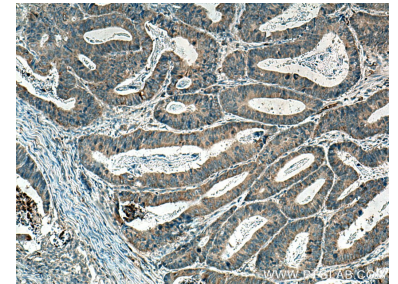
Immunofluorescent analysis of (4% PFA) fixed paraffin-embedded mouse brain tissue using MAGT1 antibody (17430-1-AP) at dilution of 1:400 and Coralite® 488-Conjugated Goat Anti-Rabbit IgG(H+L) (SA00013-2), Histone H3 antibody (68345-1-Ig, Clone: 1A2A3, blue). Heat mediated antigen retrieval with Tris-EDTA buffer (pH 9.0). This data was developed using the same antibody clone with 17430-1-PBS in a different storage buffer formulation.



Immunofluorescent analysis of (4% PFA) fixed C2C12 cells using MAGT1 antibody (17430-1-AP) at dilution of 1:200 and Coralite® 488-Conjugated AffiniPure Goat Anti-Rabbit IgG(H+L). This data was developed using the same antibody clone with 17430-1-PBS in a different storage buffer formulation.



Immunohistochemical analysis of paraffin-embedded mouse brain tissue slide using 17430-1-AP (MAGT1 Antibody) at dilution of 1:200 (under 10x lens). Heat mediated antigen retrieval with Tris-EDTA buffer (pH 9.0). This data was developed using the same antibody clone with 17430-1-PBS in a different storage buffer formulation.



Immunohistochemical analysis of paraffin-embedded human colon cancer tissue slide using 17430-1-AP (MAGT1 antibody) at dilution of 1:200 (under 10x lens). Heat mediated antigen retrieval with Tris-EDTA buffer (pH 9.0). This data was developed using the same antibody clone with 17430-1-PBS in a different storage buffer formulation.