

For Research Use Only

# TBC1D21 Polyclonal antibody, PBS Only

Catalog Number: 17463-1-PBS



## Basic Information

**Catalog Number:**

17463-1-PBS

**Size:**

100ug, Concentration: 1 mg/ml by Nanodrop;

**Source:**

Rabbit

**Isotype:**

IgG

**Immunogen Catalog Number:**

AG11301

**GenBank Accession Number:**

BC033516

**GeneID (NCBI):**

161514

**UNIPROT ID:**

Q8IYX1

**Full Name:**

TBC1 domain family, member 21

**Calculated MW:**

336 aa, 39 kDa

**Observed MW:**

35 kDa

**Purification Method:**

Antigen affinity purification

## Applications

**Tested Applications:**

WB, Indirect ELISA

**Species Specificity:**

human, mouse, rat

## Background Information

TBC1D21 genes (also known as male germ cell RAB GTPase-activating protein MGCRAAGAP) are related to sterility, as determined through cDNA microarray testing of human testicular tissues exhibiting spermatogenic defects. TBC1D21 is a protein specifically expressed in the testes that exhibits specific localizations of elongating and elongated spermatids during mammalian spermiogenesis.

## Storage

**Storage:**

Store at -80°C.

**Storage Buffer:**

PBS only, pH7.3

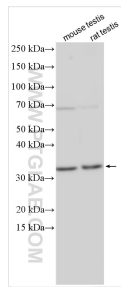
For technical support and original validation data for this product please contact:

T: 1 (888) 4PTGLAB (1-888-478-4522) (toll free in USA), or 1(312) 455-8498 (outside USA)

E: [proteintech@ptglab.com](mailto:proteintech@ptglab.com)  
W: [ptglab.com](http://ptglab.com)

**This product is exclusively available under Proteintech Group brand and is not available to purchase from any other manufacturer.**

## Selected Validation Data



Various lysates were subjected to SDS PAGE followed by western blot with 17463-1-AP (TBC1D21 antibody) at dilution of 1:800 incubated at room temperature for 1.5 hours. This data was developed using the same antibody clone with 17463-1-PBS in a different storage buffer formulation.