

For Research Use Only

FASTKD2 Polyclonal antibody

Catalog Number: 17464-1-AP

Featured Product

21 Publications



Basic Information

Catalog Number:

17464-1-AP

Size:

150ul, Concentration: 500 ug/ml by Nanodrop;

Source:

Rabbit

Isotype:

IgG

Immunogen Catalog Number:

AG11314

GenBank Accession Number:

BC001544

GeneID (NCBI):

22868

UNIPROT ID:

Q9NYY8

Full Name:

FAST kinase domains 2

Calculated MW:

710 aa, 81 kDa

Observed MW:

55-65 kDa

Purification Method:

Antigen affinity purification

Recommended Dilutions:

WB 1:500-1:2000

IP 0.5-4.0 ug for 1.0-3.0 mg of total protein lysate

IF/ICC 1:20-1:200

Applications

Tested Applications:

WB, IF/ICC, IP, ELISA

Cited Applications:

WB, IHC, IF, RIP

Species Specificity:

human, mouse, rat

Cited Species:

human, mouse, zebrafish

Positive Controls:

WB : HeLa cells, HepG2 cells, K-562 cells

IP : HepG2 cells,

IF/ICC : COS7 cells, U2OS cells

Background Information

FASTKD2 encodes a FAS-activated serine-threonine (FAST) kinase domain 2 which locates in the mitochondrial inner compartment. FASTKD2 is a member of the human FASTK protein family, formed by six architecturally related proteins named FASTK and FASTKD1-5 that localize to mitochondria. The predicted MW of FASTKD2 is 81 kDa, yet the western blot of FASTKD2 revealed a band of ~60 kDa. (PMID: 26370583, PMID: 26990993, PMID: 25683715)

Notable Publications

Author	Pubmed ID	Journal	Application
Timo Rey	32989247	Nat Cell Biol	IF, WB
Jason D Arroyo	27667664	Cell Metab	WB
Christopher Lowden	34525369	Cell Rep	WB

Storage

Storage:

Store at -20°C. Stable for one year after shipment.

Storage Buffer:

PBS with 0.02% sodium azide and 50% glycerol pH 7.3.

Aliquoting is unnecessary for -20°C storage

*** 20ul sizes contain 0.1% BSA

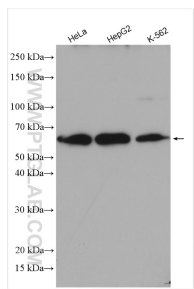
For technical support and original validation data for this product please contact:

T: 1 (888) 4PTGLAB (1-888-478-4522) (toll free in USA), or 1(312) 455-8498 (outside USA)

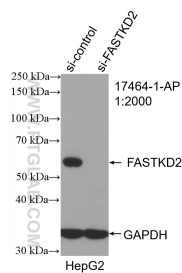
E: proteintech@ptglab.com
W: ptglab.com

This product is exclusively available under Proteintech Group brand and is not available to purchase from any other manufacturer.

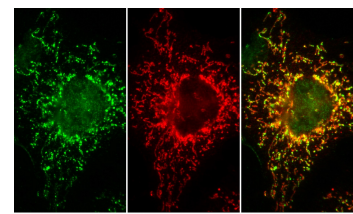
Selected Validation Data



Various lysates were subjected to SDS PAGE followed by western blot with 17464-1-AP (FASTKD2 antibody) at dilution of 1:1000 incubated at room temperature for 1.5 hours.

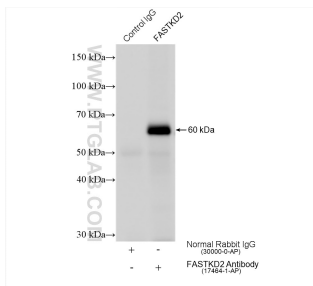


WB result of FASTKD2 antibody (17464-1-AP; 1:2000; incubated at room temperature for 1.5 hours) with sh-Control and sh-FASTKD2 transfected HepG2 cells.

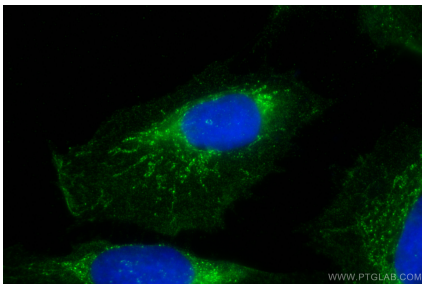


Endogenous protein in COS7 cells detected with 17464-1-AP FAST KD2 and counterstained with human anti-mitochondrial antibody (immunovision). Cells were fixed with paraformaldehyde and permeabilized with -20 methanol; similar results were obtained using detergent permeabilization following paraformaldehyde fixation.

IF result of anti-FASTKD2 (17464-1-AP) with COS7 cells.



IP result of anti-FASTKD2 (IP:17464-1-AP, 4ug; Detection:17464-1-AP 1:1000) with HepG2 cells lysate 2040 ug.



Immunofluorescent analysis of (4% PFA) fixed U2OS cells using FASTKD2 antibody (17464-1-AP) at dilution of 1:200 and CoraLite® 488-Conjugated AffiniPure Goat Anti-Rabbit IgG(H+L).