

For Research Use Only

LUZP1 Polyclonal antibody

Catalog Number: 17483-1-AP

Featured Product

9 Publications



Basic Information

Catalog Number:

17483-1-AP

Size:

150ul, Concentration: 650 ug/ml by Nanodrop;

Source:

Rabbit

Isotype:

IgG

Immunogen Catalog Number:

AG11518

GenBank Accession Number:

BC051733

GeneID (NCBI):

7798

UNIPROT ID:

Q86V48

Full Name:

leucine zipper protein 1

Calculated MW:

1026 aa, 115 kDa

Observed MW:

120 kDa

Purification Method:

Antigen affinity purification

Recommended Dilutions:

WB 1:5000-1:50000

IP 0.5-4.0 ug for 1.0-3.0 mg of total protein lysate

IHC 1:250-1:1000

Applications

Tested Applications:

WB, IHC, IP, ELISA

Cited Applications:

WB, IF, IP

Species Specificity:

human, mouse, rat

Cited Species:

human, mouse, rat

Note-IHC: suggested antigen retrieval with TE buffer pH 9.0; (*) Alternatively, antigen retrieval may be performed with citrate buffer pH 6.0

Positive Controls:

WB : mouse brain tissue, rat brain tissue

IP : mouse brain tissue,

IHC : human ovary tumor tissue, rat brain tissue

Background Information

LUZP1, also known as LUZP, is predominantly expressed in the brain, whereas it is present in the nucleus of neurons. LUZP1 is a centrosome, actin, and midbody-localizing protein implicated in ciliogenesis regulation and actin cytoskeleton stability (PMID: 33869174). LUZP1 null mice present defective neural tube closure and cardiovascular problems, which cause perinatal death. In addition, LUZP1 has also been implicated in the etiology of diseases like the 1p36 and the Townes-Brocks syndromes (PMID: 35738212).

Notable Publications

Author	Pubmed ID	Journal	Application
Xuchen Dong	34869035	Front Oncol	WB
Laura Bozal-Basterra	32553112	Elife	WB
João Gonçalves	35738212	Eur J Cell Biol	

Storage

Storage:

Store at -20°C. Stable for one year after shipment.

Storage Buffer:

PBS with 0.02% sodium azide and 50% glycerol pH 7.3.

Aliquoting is unnecessary for -20°C storage

*** 20ul sizes contain 0.1% BSA

For technical support and original validation data for this product please contact:

T: 1 (888) 4PTGLAB (1-888-478-4522) (toll free in USA), or 1(312) 455-8498 (outside USA)

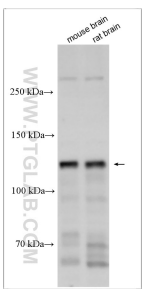
E: proteintech@ptglab.com
W: ptglab.com

This product is exclusively available under Proteintech Group brand and is not available to purchase from any other manufacturer.

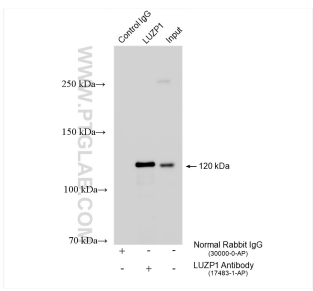
Selected Validation Data



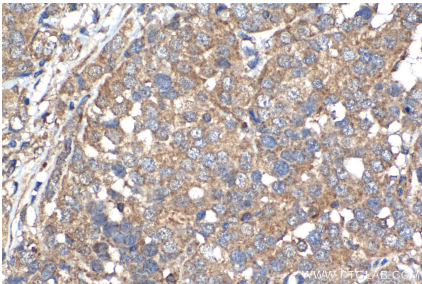
mouse brain tissue were subjected to SDS PAGE followed by western blot with 17483-1-AP (LUZP1 antibody) at dilution of 1:500 incubated at room temperature for 1.5 hours.



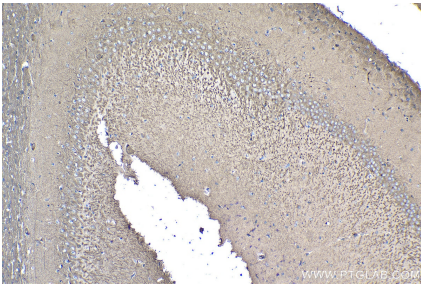
Various lysates were subjected to SDS PAGE followed by western blot with 17483-1-AP (LUZP1 antibody) at dilution of 1:15000 incubated at room temperature for 1.5 hours.



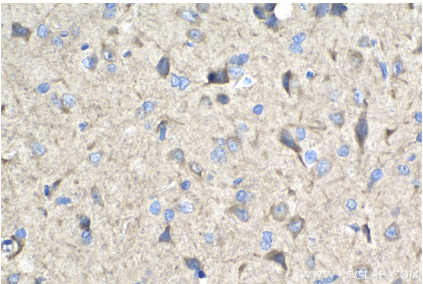
IP result of anti-LUZP1 (IP:17483-1-AP, 4ug; Detection:17483-1-AP 1:10000) with mouse brain tissue lysate 1680 ug.



Immunohistochemical analysis of paraffin-embedded human ovary tumor tissue slide using 17483-1-AP (LUZP1 antibody) at dilution of 1:500 (under 40x lens). Heat mediated antigen retrieval with Tris-EDTA buffer (pH 9.0).



Immunohistochemical analysis of paraffin-embedded rat brain tissue slide using 17483-1-AP (LUZP1 antibody) at dilution of 1:500 (under 10x lens). Heat mediated antigen retrieval with Tris-EDTA buffer (pH 9.0).



Immunohistochemical analysis of paraffin-embedded rat brain tissue slide using 17483-1-AP (LUZP1 antibody) at dilution of 1:500 (under 40x lens). Heat mediated antigen retrieval with Tris-EDTA buffer (pH 9.0).