

For Research Use Only

# GUF1 Polyclonal antibody

Catalog Number: 17489-1-AP

Featured Product



## Basic Information

### Catalog Number:

17489-1-AP

### Size:

150ul, Concentration: 500 ug/ml by Nanodrop;

### Source:

Rabbit

### Isotype:

IgG

### Immunogen Catalog Number:

AG11579

### GenBank Accession Number:

BC036768

### GeneID (NCBI):

60558

### UNIPROT ID:

Q8N442

### Full Name:

GUF1 GTPase homolog (S. cerevisiae)

### Calculated MW:

669 aa, 74 kDa

### Observed MW:

70 kDa

### Purification Method:

Antigen affinity purification

### Recommended Dilutions:

WB 1:500-1:2400

IP 0.5-4.0 ug for 1.0-3.0 mg of total protein lysate

IHC 1:20-1:200

IF/ICC 1:10-1:100

## Applications

### Tested Applications:

WB, IHC, IF/ICC, IP, ELISA

### Species Specificity:

human, mouse

**Note-IHC: suggested antigen retrieval with TE buffer pH 9.0; (\*) Alternatively, antigen retrieval may be performed with citrate buffer pH 6.0**

### Positive Controls:

**WB**: HeLa cells, mouse brain tissue, HepG2 cells, mouse pancreas tissue

**IP**: HeLa cells,

**IHC**: human oesophagus tissue, human lung cancer tissue, human kidney tissue, human testis tissue

**IF/ICC**: HepG2 cells,

## Background Information

GUF1 (GUF1 GTPase), also known as EF-4 (elongation factor 4 homolog), is a 669 amino acid protein belonging to the GTP-binding elongation factor family and the LepA subfamily. Localizing to the mitochondrion inner membrane, GUF1 promotes mitochondrial protein synthesis and binds to mitochondrial ribosomes in a GTP-dependent manner. GUF1 may act as a fidelity factor of the translation reaction, by catalyzing a one-codon backward translocation of tRNAs on improperly translocated ribosomes. In western blotting, we got double bands 74 kDa and 70 kDa, due to the N-terminal 1-49 amino acid sequence that could be cut down.

## Storage

### Storage:

Store at -20°C. Stable for one year after shipment.

### Storage Buffer:

PBS with 0.02% sodium azide and 50% glycerol pH 7.3.

Aliquoting is unnecessary for -20°C storage

\*\*\* 20ul sizes contain 0.1% BSA

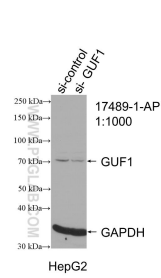
For technical support and original validation data for this product please contact:

T: 1 (888) 4PTGLAB (1-888-478-4522) (toll free in USA), or 1(312) 455-8498 (outside USA)

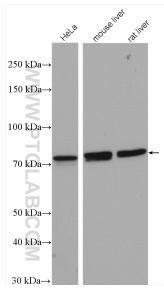
E: [proteintech@ptglab.com](mailto:proteintech@ptglab.com)  
W: [ptglab.com](http://ptglab.com)

This product is exclusively available under Proteintech Group brand and is not available to purchase from any other manufacturer.

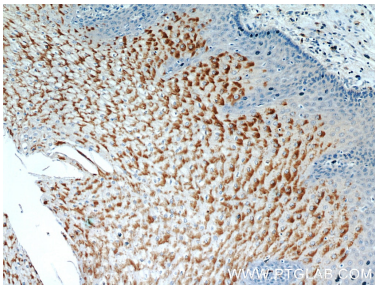
Selected Validation Data



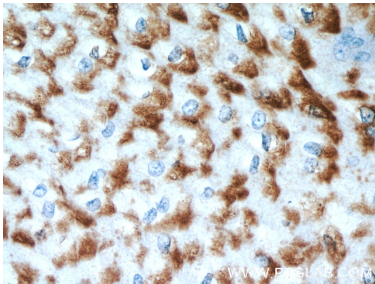
WB result of GUF1 antibody (17489-1-AP; 1:1000; incubated at room temperature for 1.5 hours) with sh-Control and sh-GUF1 transfected HepG2 cells.



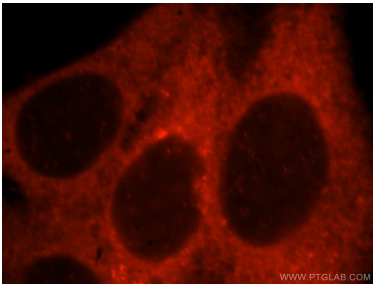
Various lysates were subjected to SDS PAGE followed by western blot with 17489-1-AP (GUF1 antibody) at dilution of 1:2000 incubated at room temperature for 1.5 hours.



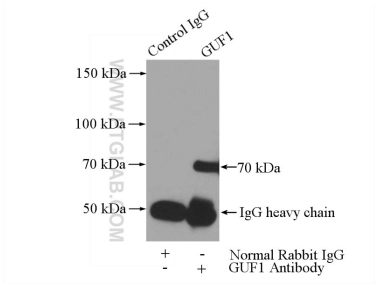
Immunohistochemical analysis of paraffin-embedded human oesophagus using 17489-1-AP (GUF1 antibody) at dilution of 1:50 (under 10x lens).



Immunohistochemical analysis of paraffin-embedded human oesophagus using 17489-1-AP (GUF1 antibody) at dilution of 1:50 (under 40x lens).



Immunofluorescent analysis of HepG2 cells, using GUF1 antibody 17489-1-AP at 1:25 dilution and Rhodamine-labeled goat anti-rabbit IgG (red).



IP result of anti-GUF1 (IP:17489-1-AP, 3ug; Detection:17489-1-AP 1:500) with HeLa cells lysate 3200ug.