

For Research Use Only

GSTCD Polyclonal antibody

Catalog Number: 17502-1-AP

Featured Product

2 Publications



Basic Information

Catalog Number:

17502-1-AP

Size:

150ul, Concentration: 400 µg/ml by Nanodrop and 140 µg/ml by Bradford method using BSA as the standard;

Source:

Rabbit

Isotype:

IgG

Immunogen Catalog Number:

AG11690

GenBank Accession Number:

BC032942

GeneID (NCBI):

79807

UNIPROT ID:

Q8NEC7

Full Name:

glutathione S-transferase, C-terminal domain containing

Calculated MW:

632 aa, 71 kDa

Observed MW:

71 kDa

Purification Method:

Antigen affinity purification

Recommended Dilutions:

WB 1:500-1:2000

IHC 1:50-1:500

IF 1:20-1:200

Applications

Tested Applications:

IF, IHC, WB, ELISA

Cited Applications:

IHC, WB

Species Specificity:

human, mouse, rat

Cited Species:

human, mouse

Note-IHC: suggested antigen retrieval with TE buffer pH 9.0; (*) Alternatively, antigen retrieval may be performed with citrate buffer pH 6.0

Positive Controls:

WB: A431 cells, L02 cells, mouse kidney tissue, mouse liver tissue

IHC: human liver tissue, mouse lung tissue

IF: A549 cells,

Background Information

Glutathione S-transferase, C-terminal domain-containing protein (GSTCD) is widely expressed in cell types relevant to airway function, including airway smooth muscle cells and epithelial cells.

Notable Publications

Author	Pubmed ID	Journal	Application
Bo Liu	31513609	PLoS One	IHC
Amanda P Henry	31370853	Respir Res	WB

Storage

Storage:

Store at -20°C. Stable for one year after shipment.

Storage Buffer:

PBS with 0.02% sodium azide and 50% glycerol pH 7.3.

Aliquoting is unnecessary for -20°C storage

*** 20ul sizes contain 0.1% BSA

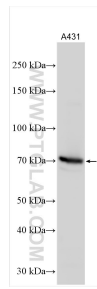
For technical support and original validation data for this product please contact:

T: 1 (888) 4PTGLAB (1-888-478-4522) (toll free in USA), or 1(312) 455-8498 (outside USA)

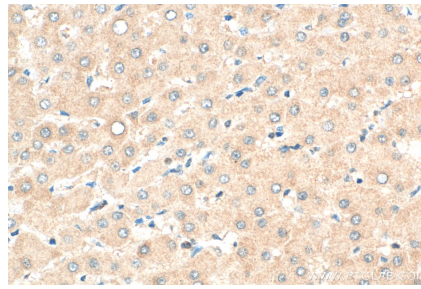
E: proteintech@ptglab.com
W: ptglab.com

This product is exclusively available under Proteintech Group brand and is not available to purchase from any other manufacturer.

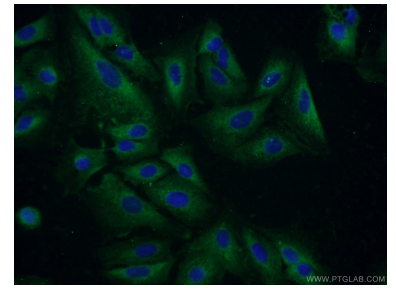
Selected Validation Data



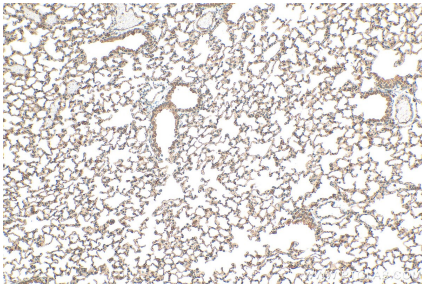
Various lysates were subjected to SDS PAGE followed by western blot with 17502-1-AP (GSTCD antibody) at dilution of 1:1000 incubated at room temperature for 1.5 hours.



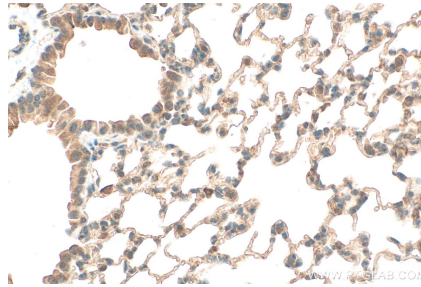
Immunohistochemical analysis of paraffin-embedded human liver tissue slide using 17502-1-AP (GSTCD antibody) at dilution of 1:200 (under 40x lens). Heat mediated antigen retrieval with Tris-EDTA buffer (pH 9.0).



Immunofluorescent analysis of A549 cells using 17502-1-AP (GSTCD antibody) at dilution of 1:50 and Alexa Fluor 488-conjugated AffiniPure Goat Anti-Rabbit IgG(H+L).



Immunohistochemical analysis of paraffin-embedded mouse lung tissue slide using 17502-1-AP (GSTCD antibody) at dilution of 1:200 (under 10x lens). Heat mediated antigen retrieval with Tris-EDTA buffer (pH 9.0).



Immunohistochemical analysis of paraffin-embedded mouse lung tissue slide using 17502-1-AP (GSTCD antibody) at dilution of 1:200 (under 40x lens). Heat mediated antigen retrieval with Tris-EDTA buffer (pH 9.0).