

For Research Use Only

# TOM1 Polyclonal antibody

Catalog Number: 17506-1-AP **1 Publications**



## Basic Information

<b>Catalog Number:</b> 17506-1-AP	<b>GenBank Accession Number:</b> BC046151	<b>Purification Method:</b> Antigen affinity purification
<b>Size:</b> 150ul , Concentration: 500 µg/ml by Nanodrop and 367 µg/ml by Bradford method using BSA as the standard;	<b>GeneID (NCBI):</b> 10043	<b>Recommended Dilutions:</b> WB 1:500-1:3000
<b>Source:</b> Rabbit	<b>Full Name:</b> target of myb1 (chicken)	
<b>Isotype:</b> IgG	<b>Calculated MW:</b> 493 aa, 54 kDa	
<b>Immunogen Catalog Number:</b> AG11706	<b>Observed MW:</b> 54 kDa	

## Applications

<b>Tested Applications:</b> WB,ELISA	<b>Positive Controls:</b> WB : human liver tissue, HeLa cells, human skeletal muscle tissue, K-562 cells, LO2 cells
<b>Cited Applications:</b> IF, IHC	
<b>Species Specificity:</b> human, mouse, rat	
<b>Cited Species:</b> human	

## Background Information

TOM1 is a member of VHS (VPS-27, Hrs, and STAM)-domain-containing protein family that functions as adaptor proteins in the intracellular trafficking and sorting of plasma membrane proteins. TOM1 colocalized with key proteins of the protein-degradation systems. Recently TOM1 has been reported to be localized in the hallmarks of AD pathology (27206884).

## Notable Publications

Author	Pubmed ID	Journal	Application
Kouki Makioka	27206884	J Neurol Sci	IHC,IF

## Storage

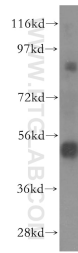
**Storage:**  
Store at -20°C. Stable for one year after shipment.  
**Storage Buffer:**  
PBS with 0.02% sodium azide and 50% glycerol pH 7.3.  
Aliquoting is unnecessary for -20°C storage

\*\*\* 20ul sizes contain 0.1% BSA

For technical support and original validation data for this product please contact:  
T: 1 (888) 4PTGLAB (1-888-478-4522) (toll free in USA), or 1(312) 455-8498 (outside USA)  
E: proteintech@ptglab.com  
W: ptglab.com

This product is exclusively available under Proteintech Group brand and is not available to purchase from any other manufacturer.

## Selected Validation Data



human liver tissue were subjected to SDS PAGE followed by western blot with 17506-1-AP (TOM1 antibody) at dilution of 1:600 incubated at room temperature for 1.5 hours.