

For Research Use Only

Somatostatin (64-81aa) Polyclonal antibody

Catalog Number: 17512-1-AP

6 Publications



Basic Information

Catalog Number:

17512-1-AP

Size:

150ul, Concentration: 350 ug/ml by Nanodrop;

Source:

Rabbit

Isotype:

IgG

GenBank Accession Number:

NM_001048

GeneID (NCBI):

6750

UNIPROT ID:

P61278

Full Name:

somatostatin

Calculated MW:

13 kDa

Purification Method:

Antigen affinity purification

Recommended Dilutions:

IHC: 1:6400-1:25600

IF-P: 1:50-1:500

Applications

Tested Applications:

IHC, IF-P, ELISA

Cited Applications:

IHC, IF

Species Specificity:

human, mouse

Cited Species:

human, mouse, rat

Note-IHC: suggested antigen retrieval with TE buffer pH 9.0; (*) Alternatively, antigen retrieval may be performed with citrate buffer pH 6.0

Positive Controls:

IHC: mouse pancreas tissue, human pancreas cancer tissue, mouse brain tissue, rat dorsal root ganglion tissue

IF-P: human pancreas tissue, mouse pancreas tissue, mouse brain tissue

Background Information

Somatostatin is a peptide hormone that regulates the endocrine system and affects neurotransmission and cell proliferation via interaction with G protein-coupled somatostatin receptors and inhibition of the release of numerous secondary hormones. Somatostatin is a useful marker of D-cells of pancreatic islet cells. Somatostatin inhibits ins and glucagon secretion. Somatostatin has two active forms produced by alternative cleavage of a single preproprotein: one of 14 amino acids, the other of 28 amino acids. This antibody can recognize the full length and propeptide of Somatostatin.

Notable Publications

Author	Pubmed ID	Journal	Application
Xiaoyi Zhang	34556631	Cell Death Dis	IF
Jingli Cao	33744924	G3 (Bethesda)	
Fei Han	31440379	Aging Dis	IF

Storage

Storage:

Store at -20°C. Stable for one year after shipment.

Storage Buffer:

PBS with 0.02% sodium azide and 50% glycerol, pH7.3

Aliquoting is unnecessary for -20°C storage

*** 20ul sizes contain 0.1% BSA

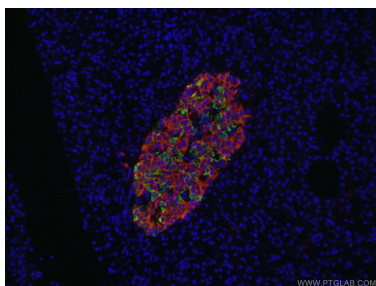
For technical support and original validation data for this product please contact:

T: 1 (888) 4PTGLAB (1-888-478-4522) (toll free in USA), or 1(312) 455-8498 (outside USA)

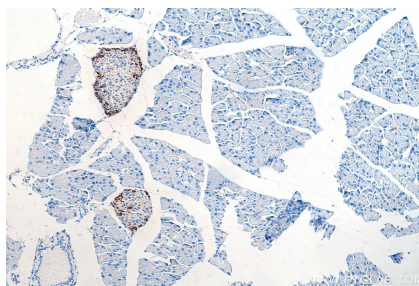
E: proteintech@ptglab.com
W: ptglab.com

This product is exclusively available under Proteintech Group brand and is not available to purchase from any other manufacturer.

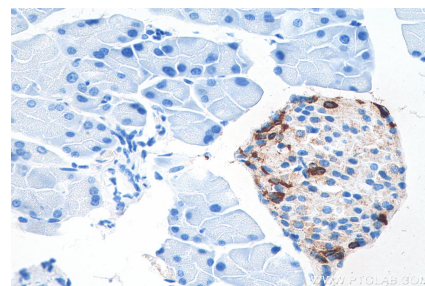
Selected Validation Data



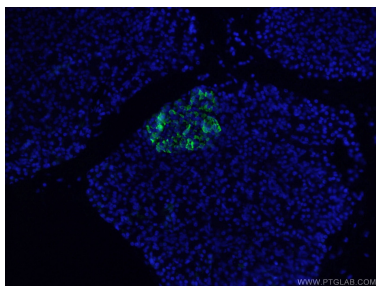
Immunofluorescent analysis of (4% PFA) fixed human pancreas tissue using 17512-1-AP Somatostatin-Specific antibody (green) and 66198-1-Ig Insulin antibody (red) at dilution of 1:50 and CoraLite488-Conjugated AffiniPure Goat Anti-Rabbit IgG(H+L).



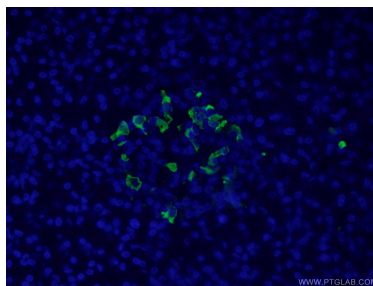
Immunohistochemical analysis of paraffin-embedded mouse pancreas tissue slide using 17512-1-AP (Somatostatin (64-81aa) antibody) at dilution of 1:12800 (under 10x lens). Heat mediated antigen retrieval with Tris-EDTA buffer (pH 9.0).



Immunohistochemical analysis of paraffin-embedded mouse pancreas tissue slide using 17512-1-AP (Somatostatin (64-81aa) antibody) at dilution of 1:12800 (under 40x lens). Heat mediated antigen retrieval with Tris-EDTA buffer (pH 9.0).



Immunofluorescent analysis of (4% PFA) fixed human pancreas tissue using 17512-1-AP (Somatostatin-Specific antibody) at dilution of 1:200 and Alexa Fluor 488-Conjugated AffiniPure Goat Anti-Rabbit IgG(H+L).



Immunofluorescent analysis of (4% PFA) fixed human pancreas tissue using 17512-1-AP (Somatostatin-Specific antibody) at dilution of 1:200 and Alexa Fluor 488-Conjugated AffiniPure Goat Anti-Rabbit IgG(H+L).