

For Research Use Only

# Cytokeratin 17-Specific Polyclonal antibody



Catalog Number: 17516-1-AP

Featured Product

21 Publications

## Basic Information

### Catalog Number:

17516-1-AP

### Size:

150ul , Concentration: 600 µg/ml by Nanodrop;

### Source:

Rabbit

### Isotype:

IgG

### GenBank Accession Number:

NM\_000422

### GeneID (NCBI):

3872

### Full Name:

keratin 17

### Calculated MW:

48 kDa

### Observed MW:

48 kDa

### Purification Method:

Antigen affinity purification

### Recommended Dilutions:

WB 1:5000-1:50000

IP 0.5-4.0 µg for 1.0-3.0 mg of total protein lysate

IHC 1:50-1:500

IF 1:300-1:1200

## Applications

### Tested Applications:

FC, IF, IHC, IP, WB, ELISA

### Cited Applications:

CoIP, IF, IHC, WB

### Species Specificity:

human, mouse

### Cited Species:

human, mouse

### Positive Controls:

**WB** : A431 cells, mouse skin tissue, HeLa cells, HEK-293 cells

**IP** : A431 cells,

**IHC** : human cervical cancer tissue, human lung cancer tissue

**IF** : HepG2 cells, HeLa cells

**Note-IHC: suggested antigen retrieval with TE buffer pH 9.0; (\*) Alternatively, antigen retrieval may be performed with citrate buffer pH 6.0**

## Background Information

Keratins are a large family of proteins that form the intermediate filament cytoskeleton of epithelial cells, which are classified into two major sequence types. Type I keratins are a group of acidic intermediate filament proteins, including K9-K23, and the hair keratins Ha1-Ha8. Type II keratins are the basic or neutral counterparts to the acidic type I keratins, including K1-K8, and the hair keratins, Hb1-Hb6. Keratin 17 is a type I cytokeratin. It is found in nail beds, hair follicles, sebaceous glands, and other epidermal appendages. It is used as a marker for trauma. This antibody is specifically against KRT17.

## Notable Publications

Author	Pubmed ID	Journal	Application
Mengjie Li	34845376	Oncogene	WB
Shidi Wu	31790685	Life Sci	WB
Xiaoqiu Zhou	30655849	Oncol Lett	IHC

## Storage

### Storage:

Store at -20°C. Stable for one year after shipment.

### Storage Buffer:

PBS with 0.02% sodium azide and 50% glycerol pH 7.3.

Aliquoting is unnecessary for -20°C storage

\*\*\* 20ul sizes contain 0.1% BSA

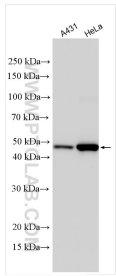
For technical support and original validation data for this product please contact:

T: 1 (888) 4PTGLAB (1-888-478-4522) (toll free in USA), or 1(312) 455-8498 (outside USA)

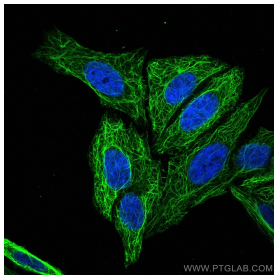
E: [proteintech@ptglab.com](mailto:proteintech@ptglab.com)  
W: [ptglab.com](http://ptglab.com)

This product is exclusively available under Proteintech Group brand and is not available to purchase from any other manufacturer.

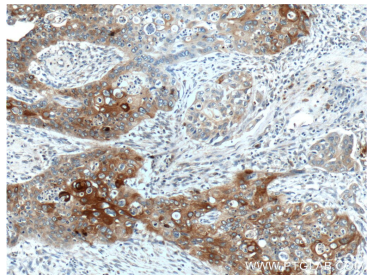
Selected Validation Data



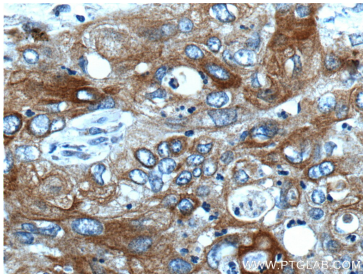
Various lysates were subjected to SDS PAGE followed by western blot with 17516-1-AP (Cytokeratin 17-Specific antibody) at dilution of 1:40000 incubated at room temperature for 1.5 hours.



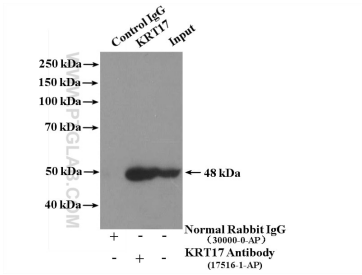
Immunofluorescent analysis of (-20°C Methanol) fixed HepG2 cells using Cytokeratin 17-Specific antibody (17516-1-AP) at dilution of 1:600 and CoraLite® 488-Conjugated AffiniPure Goat Anti-Rabbit IgG(H+L).



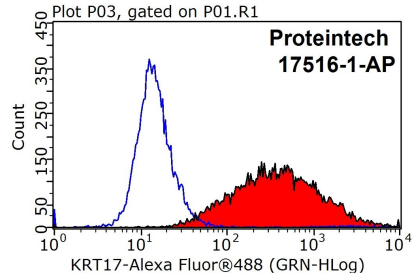
Immunohistochemical analysis of paraffin-embedded human cervical cancer tissue slide using 17516-1-AP (Cytokeratin 17-Specific antibody at dilution of 1:200 (under 10x lens).



Immunohistochemical analysis of paraffin-embedded human cervical cancer tissue slide using 17516-1-AP (Cytokeratin 17-Specific antibody at dilution of 1:200 (under 40x lens).



IP Result of anti-Cytokeratin 17-Specific (IP:17516-1-AP, 4ug; Detection:17516-1-AP 1:1000) with A431 cells lysate 1200ug.



1X10<sup>6</sup> HeLa cells were stained with 0.2ug Cytokeratin 17-Specific antibody (17516-1-AP, red) and control antibody (blue). Fixed with 90% MeOH blocked with 3% BSA (30 min). Alexa Fluor 488-conjugated AffiniPure Goat Anti-Rabbit IgG(H+L) with dilution 1:1000.