

For Research Use Only

PTCH1 Polyclonal antibody, PBS Only

Catalog Number: 17520-1-PBS

Featured Product



Basic Information

Catalog Number:

17520-1-PBS

Size:

100ug, Concentration: 1 mg/ml by Nanodrop;

Source:

Rabbit

Isotype:

IgG

GenBank Accession Number:

NM_000264

GeneID (NCBI):

5727

UNIPROT ID:

Q13635

Full Name:

patched homolog 1 (Drosophila)

Calculated MW:

161 kDa

Observed MW:

161 kDa

Purification Method:

Antigen affinity purification

Applications

Tested Applications:

WB, Indirect ELISA

Species Specificity:

human

Background Information

PTCH1 (patched homolog 1) is a twelve-pass transmembrane protein that acts as a receptor of Hedgehog signaling pathway (PMID: 8906794). Hedgehog pathway plays a critical role in embryonic development and tissue homeostasis, and its dysregulation has been implicated in many human diseases including congenital disorder and cancer (PMID: 23719536; 23532857). In the absence of Hedgehog proteins (SHH, IHH and DHH in humans), PTCH1 represses the activity of Smoothened (SMO). Binding of Hedgehog proteins to PTCH1 inhibits the repression of SMO, resulting in the activation of downstream targets through the Gli transcriptional effectors (PMID: 23719536; 17139287). The gene of PTCH1 is considered to be a tumor suppressor gene. Mutations of this gene have been associated with basal cell nevus syndrome, esophageal squamous cell carcinoma, trichoepitheliomas, transitional cell carcinomas of the bladder, as well as holoprosencephaly.

Storage

Storage:

Store at -80°C.

Storage Buffer:

PBS only, pH7.3

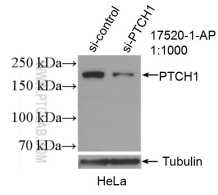
For technical support and original validation data for this product please contact:

T: 1 (888) 4PTGLAB (1-888-478-4522) (toll free in USA), or 1(312) 455-8498 (outside USA)

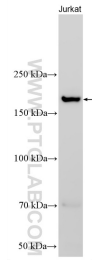
E: proteintech@ptglab.com
W: ptglab.com

This product is exclusively available under Proteintech Group brand and is not available to purchase from any other manufacturer.

Selected Validation Data



WB result of PTCH1 antibody (17520-1-AP; 1:1000; incubated at room temperature for 1.5 hours) with sh-Control and sh-PTCH1 transfected HeLa cells. This data was developed using the same antibody clone with 17520-1-PBS in a different storage buffer formulation.



Jurkat cells lysate was subjected to SDS PAGE followed by western blot with 17520-1-AP (PTCH1 antibody) at dilution of 1:500 incubated at room temperature for 1.5 hours. This data was developed using the same antibody clone with 17520-1-PBS in a different storage buffer formulation.